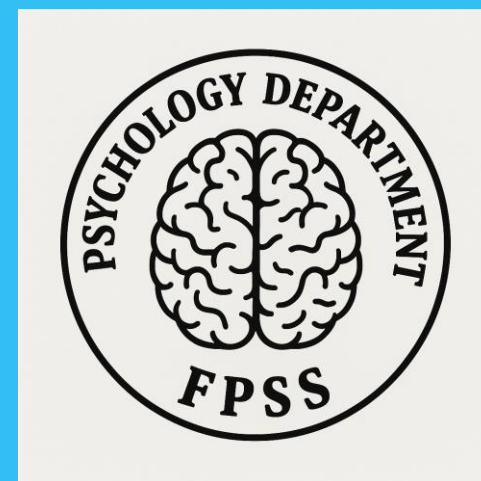


Psychology Taster Day

2026



Psychology A level (AQA)

Objectives:

To help you understand the course content and answer some key questions.

To help inform your decision about A level choices in September

Psychology Teachers

Mrs Smith
Head of Department
ML2

Mrs Wright
ML1

Mr Marris
ML1

Psychology Exam Overview

Paper 1 – 2 hours – 1/3 of A Level – 96 marks total

**Introductory Topics
in Psychology**

Social Influence

Memory

Attachment

Clinical Psychology
& Mental Health



Paper 2 – 2 hours – 1/3 of A Level – 96 marks total

**Psychology in
Context**

Approaches

Biopsychology

Research Methods
1

Research Methods
2



Paper 3 – 2 hours – 1/3 of A Level – 96 marks total

**Issues and Options
in Psychology**

Issues and Debates

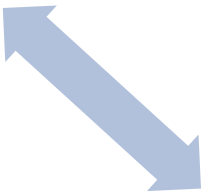
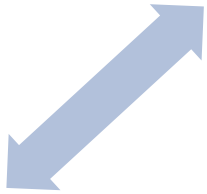
Relationships

Schizophrenia

Forensic
Psychology

Psychology Assessment Objectives

AO1
Demonstrate knowledge and understanding
(Describe studies, theories, approaches,
issues, debates...)



AO2
Apply knowledge and understanding
(Refer to the scenario provided and
apply understanding of theories and
studies to understanding behaviours
in life...)



AO3
Analyse, interpret and evaluate
(Evaluative (strengths and limitations)
commentary on approaches, issues,
debates, studies and theories...)

Which topics are studied?

Year 1

- Attachment
- Memory
- Social Influence
- Approaches
- Clinical Psychology & Mental Health
- Biopsychology
- Research Methods

Year 2

- Schizophrenia
- Relationships
- Forensic Psychology
- Research Methods (Yr 2)
- Issues and Debates

For examples of the type of things we study you can look at the following video clips

Year 1

- Memory - Clive Wearing case study

<https://www.youtube.com/watch?v=Vwigmktix2Y>

Year 2

- Schizophrenia

<https://www.youtube.com/watch?v=cbCtE5fEJ6Q>

Which GCSE subjects are most relevant to the study of psychology?

Which GCSE subjects are most relevant?



The answer is **science** and **maths**



Psychology is the study of human behaviour – in a **scientific** way – using **scientific** methodology. This is why it is found under science if you look it up in a university prospectus. You can therefore expect to be using scientific approaches and manipulating data.



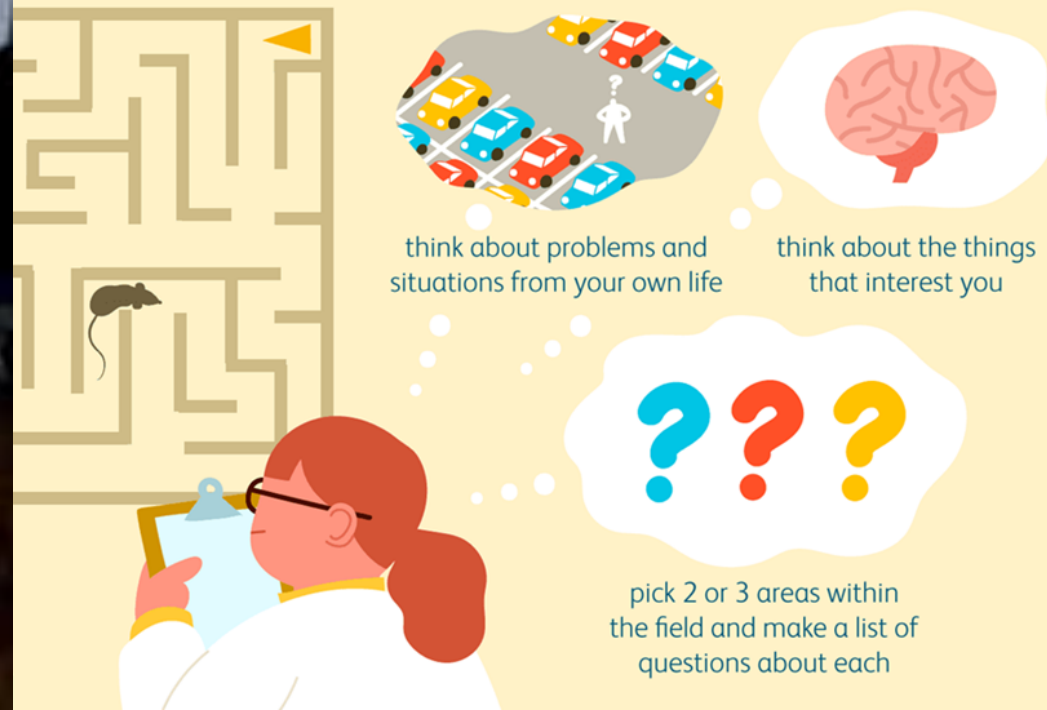
Moreover, the reason why lots of A-level and degree-level courses ask for **mathematics** is not just because of the actual numerical work but because of the understanding needed for the design and interpretation of investigations and their findings.

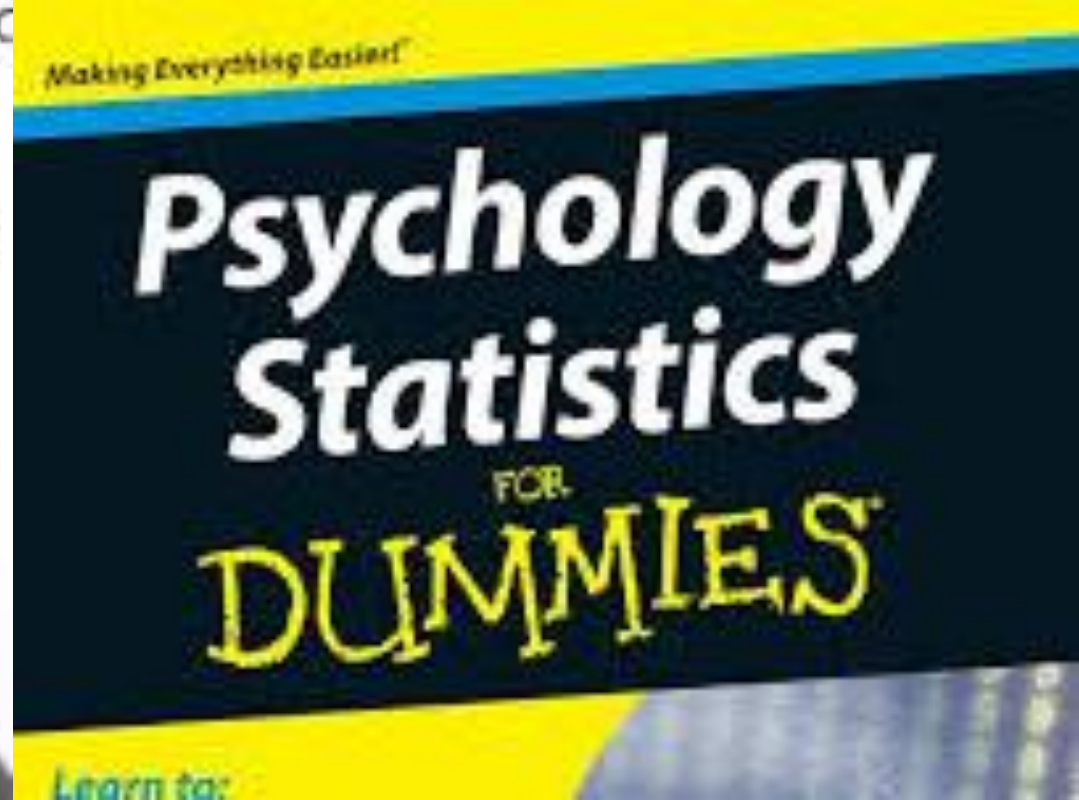
Where does the science and maths come in?

- You need to become confident with the following scientific methods: field experiments, natural experiments, investigations, surveys, interviews, observations, case studies and questionnaires.



Ways to Inspire Ideas for Psychology Experiments

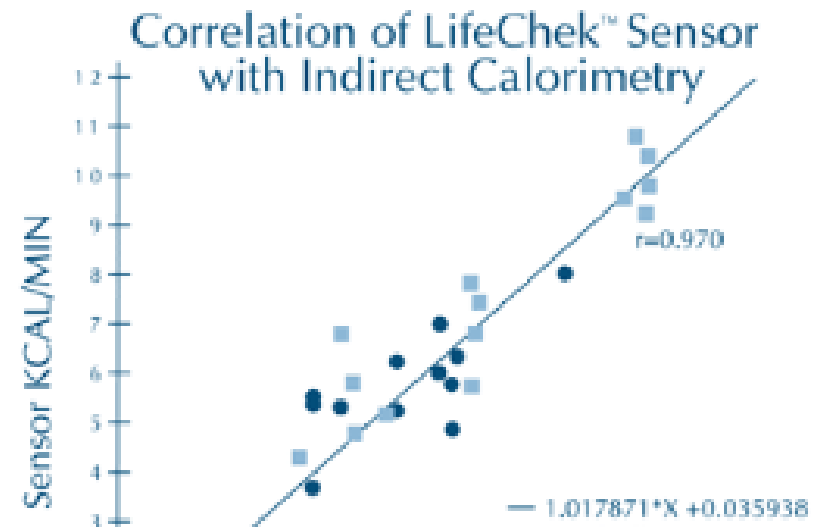




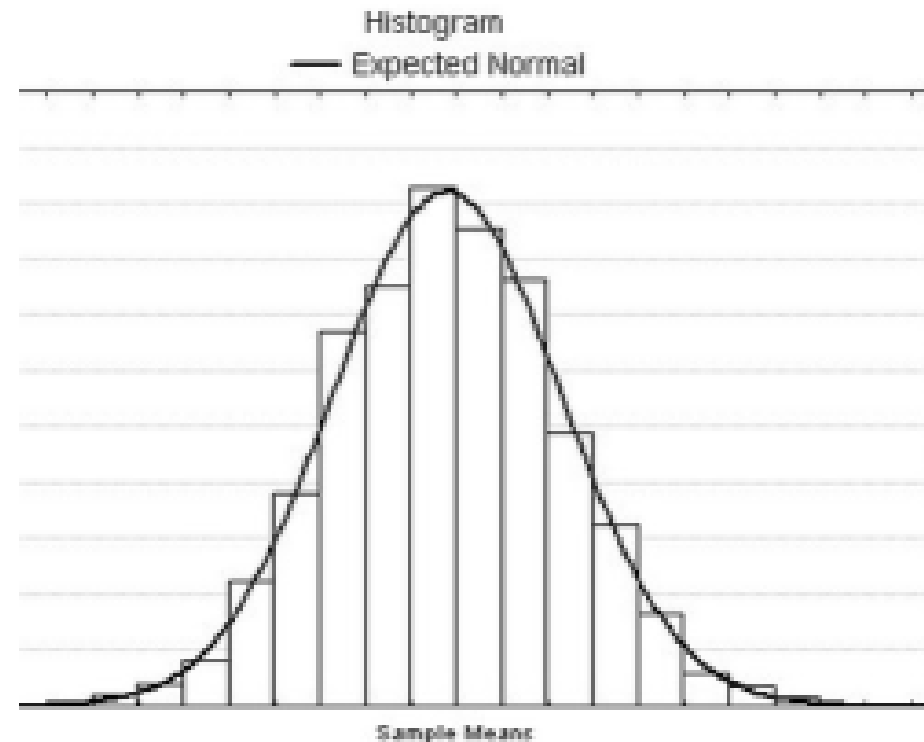
Where does the
science
and maths come
in?

You need to become confident with
manipulating and analysing data -
e.g. is it qualitative or quantitative
and is it reliable or valid.

Where does the science and maths come in?



You need to become confident drawing and analysing graphs, bar charts, scattergrams and correlations



Some examples of Yr. 1 content

The following are examples of one topic which will be taught at the start of September – Attachment. These are some relevant video clips:
Strange situation research

<https://www.youtube.com/watch?v=PnFKaaOSPmk>

The case study of Genie

<https://www.youtube.com/watch?v=VjZolHCrC8E>

Bowlby's monotropic theory

<https://www.youtube.com/watch?v=nKMgJD-VDzc>



Is there any coursework? How will students be assessed?



There is no coursework



There are three exams at the end of the two years:



Paper 1 – 2 hours – Social Influence, Memory, Attachment , [Clinical Psychology and Mental Health](#)



Paper 2 – 2 hours– Approaches, Research Methods, Biopsychology



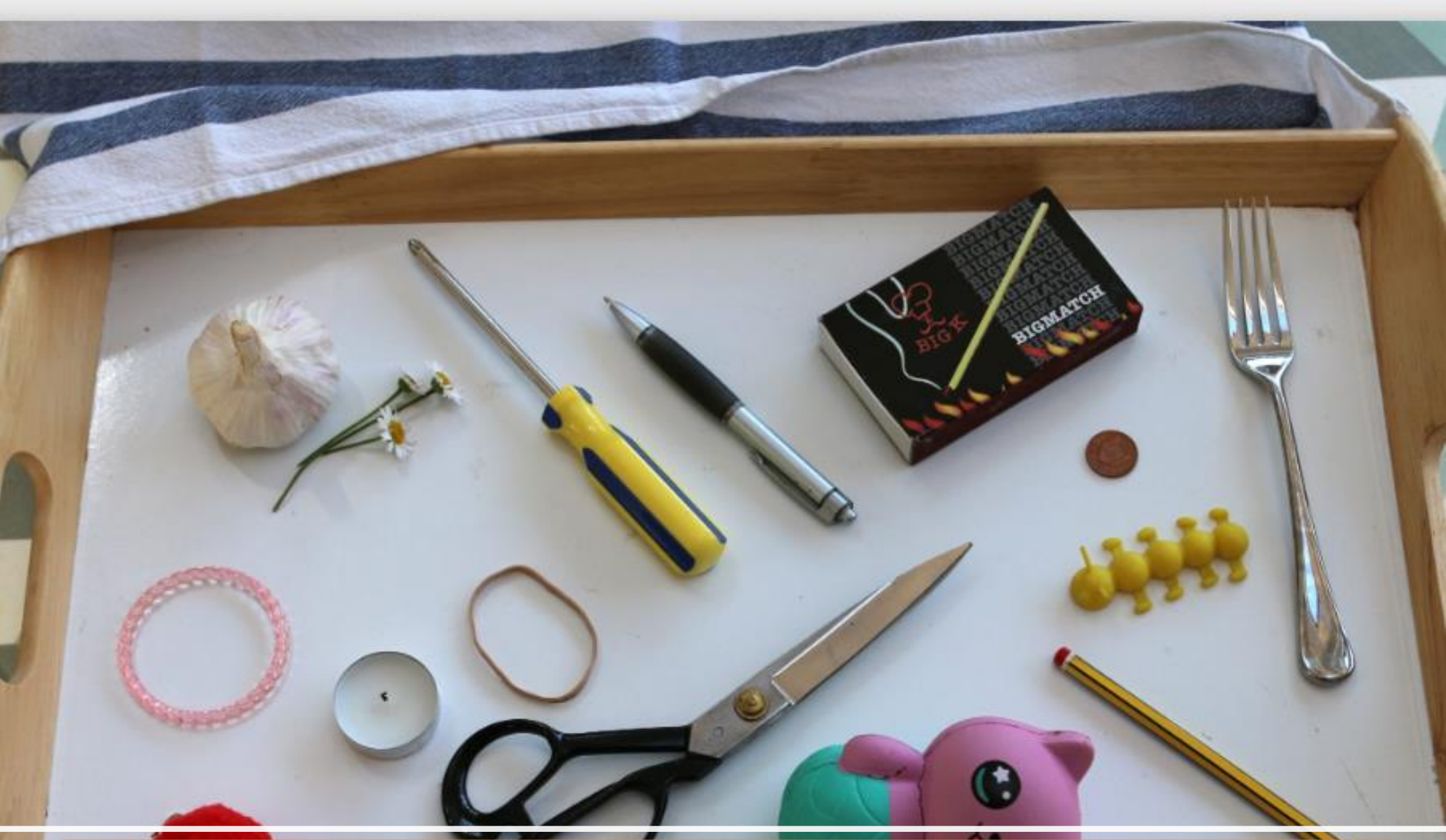
Paper 3 - 2 hours – Issues and Debates, Schizophrenia, Forensic Psychology, Relationships



Here are some examples of past papers from AQA



<https://www.aqa.org.uk/find-past-papers-and-mark-schemes>



Memory – Kim's game



Memory – The Generation Game

<https://www.youtube.com/watch?v=4RpiDnoI1Fo>

Guess the beans!

- How many jellybeans in this jar?
- Write down your guess.
- Can you influence others to change their mind?
- Did you manage to influence others?
- Did anyone refuse to be influenced?



Social Influence

- How many jellybeans in the jar?
- Write down your guess.
- Can you influence others to change their mind?
- Did you manage to influence others?
- Did anyone refuse to be influenced?
WHY?



The Highest Paying Psychology Careers



Psychiatrists



Industrial-Organizational Psychologists



Neuropsychologists



Clinical Psychologists

Psychology Careers

Other areas in which Psychology graduates are often employed include

- Advertising
- Armed Forces
- Banking and Finance
- Business Management
- Diplomacy
- Human Resources
- Nursing
- Pet Psychology
- Police
- Sales and Marketing
- Social Work
- Sports Psychology
- Psychometric Testing
- Psychotherapy
- Statistical Analysis

Plenary

I hope you have a better idea about psychology A level now.

- **You should have a better understanding of the course.**
- **You have the answers to some key questions.**
- **I hope you are in a better position to make your choices**
- **You should know what the transition task is and where to find the details and help**





Summer Tasks:



Approaches – An academic study

Pick an approach:

- **(Approaches:**
Humanistic/Psychodynamic/Bio
logical/Cognitive/Learning –
behaviourists & Social Learning
Theory)
- Find out all you can about the
approach and then create a
PowerPoint slide
presentation...5 mins long –
font size 18 min. and min. of 5
slides long...

Research – A Memory Study

- Decide on a topic within the
memory unit.
- Conduct an experiment on 5
people (make sure that it is
ethically sound).
- Write this up as a science
experiment:
(Aims/Method/Results/
Conclusion)
- Answer: what does it tell us about
the way our memories work
- Any questions email me at:
jayne.wright@furzeplatt.net

Thank you for listening!

**WE LOOK FORWARD TO WELCOMING
YOU TO THE FP PSYCHOLOGY TEAM!**

MRS WRIGHT



AMBITIOUS

COLLABORATIVE

HAPPY

INTEGRITY

ENDURANCE

VERSATILITY

EXCELLENCE