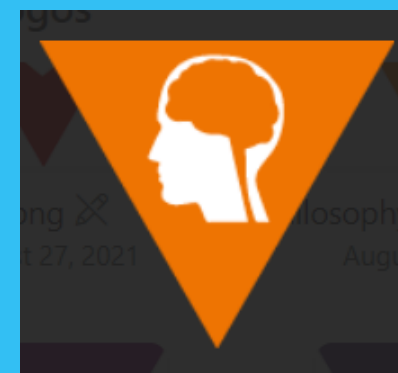


# Psychology Taster Day

## 2025



# Psychology A level (AQA)

## **Objectives:**

**To help you understand the course content and answer some key questions.**

**To help inform your decision about A level choices in September**

# Psychology Teachers

Mrs Wright  
(HOD) – P4

Mrs Smith  
– P3

Mr Marris  
– P3

# Which topics are studied?

## Year 1

- Attachment
- Memory
- Social Influence
- Approaches
- Psychopathology
- Biopsychology
- Research Methods

## Year 2

- Schizophrenia
- Relationships
- Forensic Psychology
- Research Methods
- Issues and Debates

# Introduction to the study of behaviour

## Starter:

This is a video I normally show to new students, it is from The Big Bang Theory show. It genuinely shows one psychological approach to explain how we learn – it is the basis of the behaviourist approach (learning theory). We will study this in some detail in Year 1.

<https://www.youtube.com/watch?v=teLoNYvOf90>



For examples of the type of things we study you can look at the following video clips

## Year 1

- Memory - Clive Wearing case study

<https://www.youtube.com/watch?v=Vwigmktix2Y>

## Year 2

- Schizophrenia

<https://www.youtube.com/watch?v=cbCtE5fEJ6Q>

# Which GCSE subjects are most relevant?



The answer is **science** and **maths**



Psychology is the study of human behaviour – in a **scientific** way – using **scientific** methodology. This is why it is found under science if you look it up in a university prospectus. You can therefore expect to be using scientific approaches and manipulating data.



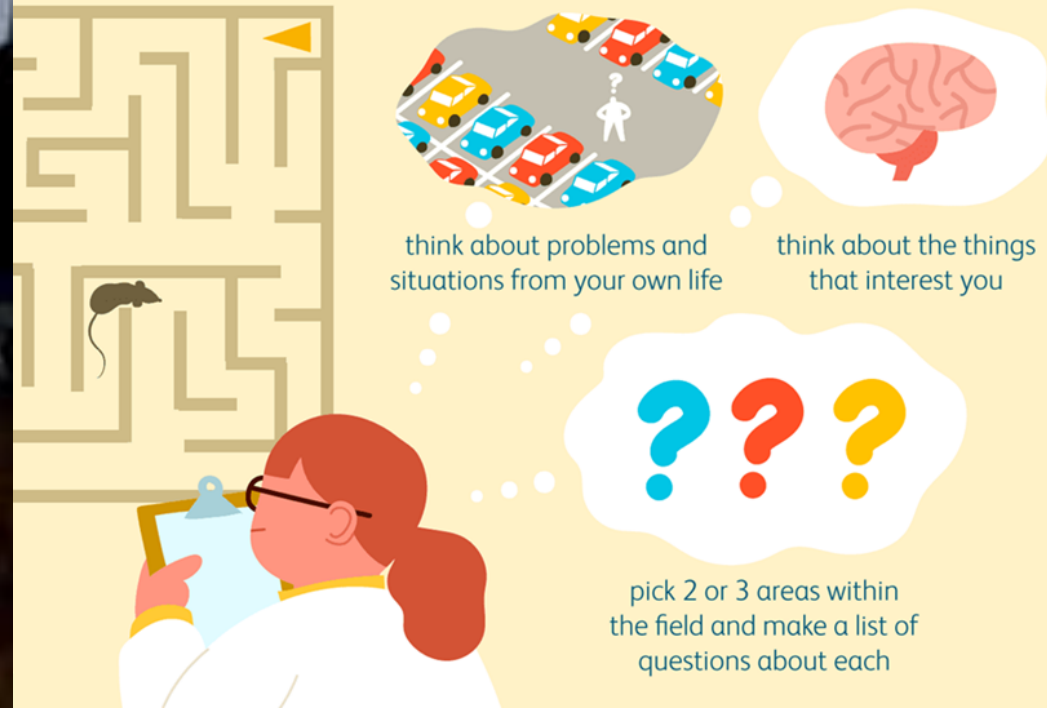
Moreover, the reason why lots of A-level and degree-level courses ask for **mathematics** is not just because of the actual numerical work but because of the understanding needed for the design and interpretation of investigations and their findings.

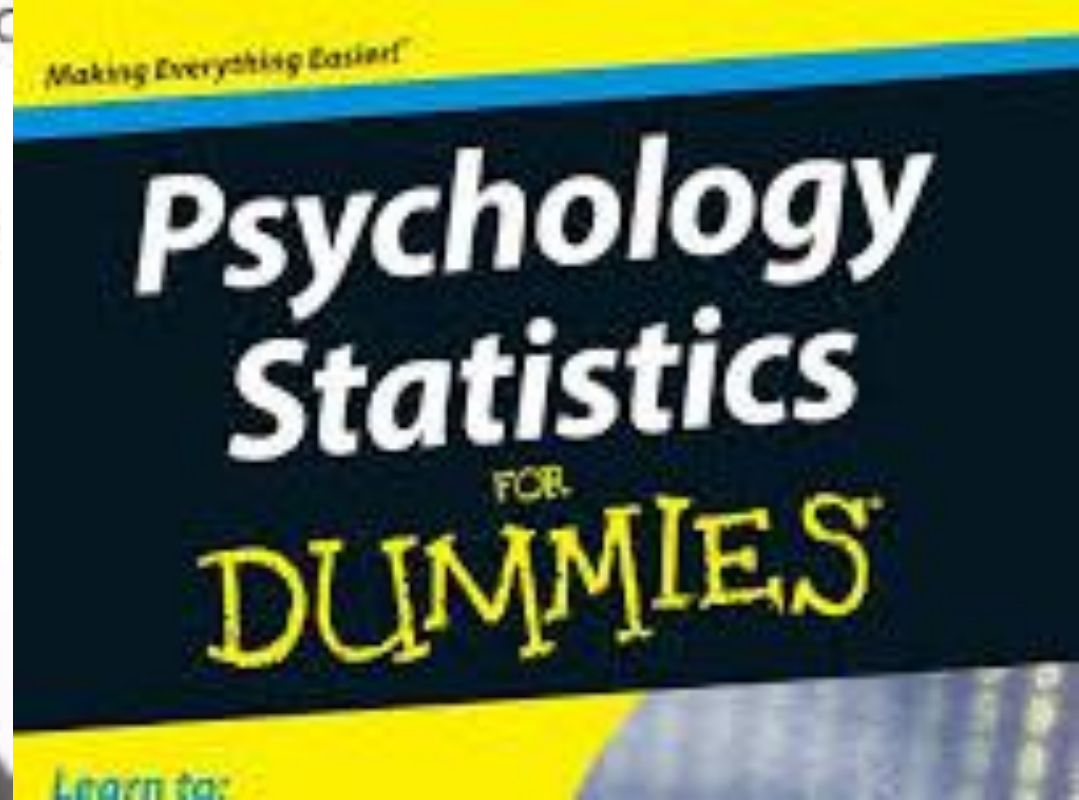
# Where does the science and maths come in?

- You need to become confident with the following scientific methods: field experiments, natural experiments, investigations, surveys, interviews, observations, case studies and questionnaires.



## Ways to Inspire Ideas for Psychology Experiments

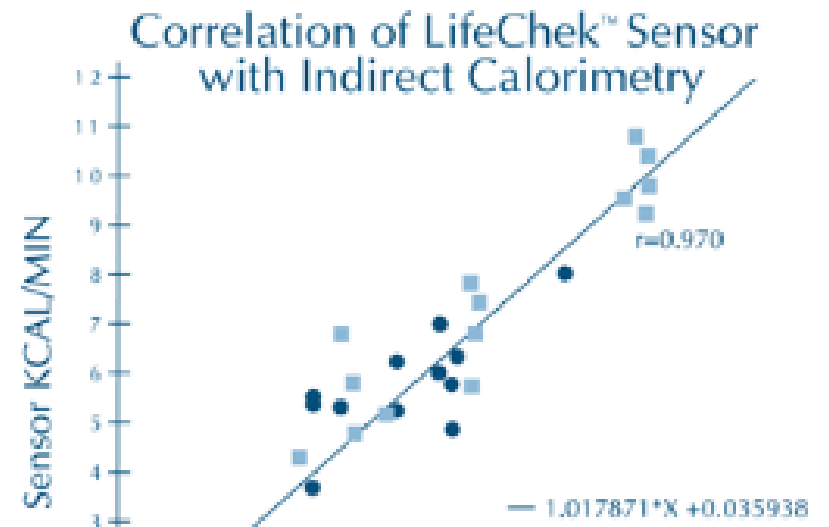




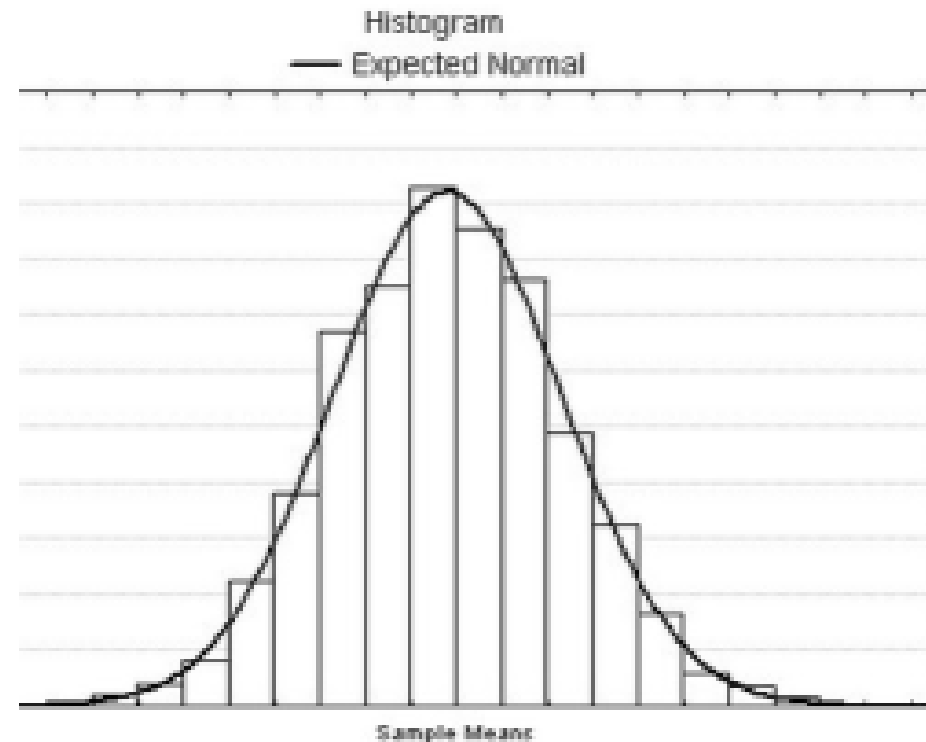
Where does the  
science  
and maths come  
in?

You need to become confident with  
manipulating and analysing data -  
e.g. is it qualitative or quantitative  
and is it reliable or valid.

# Where does the science and maths come in?



You need to become confident drawing and analysing graphs, bar charts, scattergrams and correlations



# Some examples of Yr. 1 content

The following are examples of one topic which will be taught at the start of September – Attachment. These are some relevant video clips:  
Strange situation research

<https://www.youtube.com/watch?v=PnFKaaOSPmk>

The case study of Genie

<https://www.youtube.com/watch?v=VjZolHCrC8E>

Bowlby's monotropic theory

<https://www.youtube.com/watch?v=nKMgJD-VDzc>



# Is there any coursework? How will students be assessed?



There is no coursework



There are three exams at the end of the two years:



Paper 1 – 2 hours –  
Social Influence,  
Memory,  
Attachment ,  
Psychopathology



Paper 2 – 2 hours–  
Approaches,  
Research Methods,  
Biopsychology



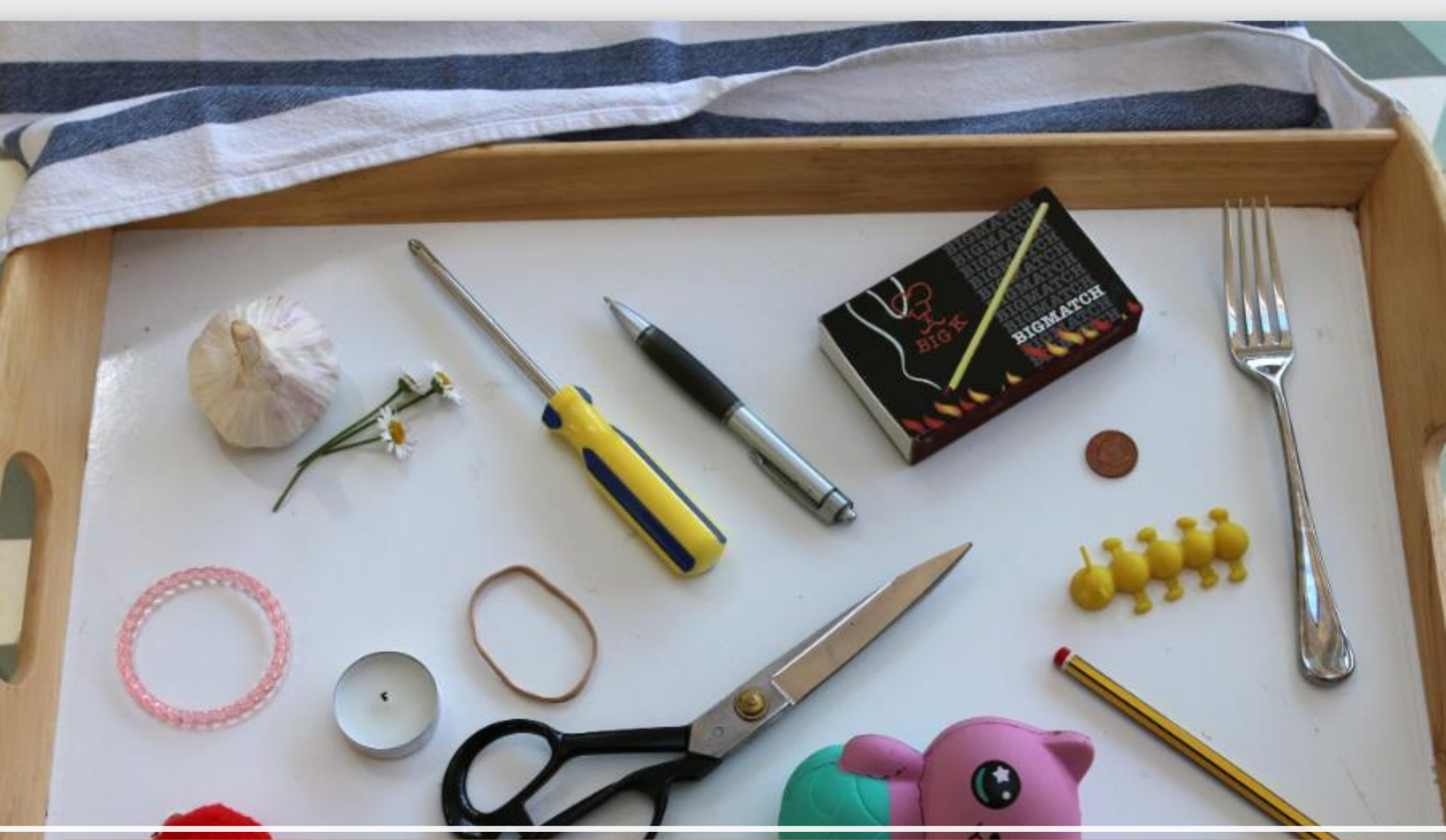
Paper 3 - 2 hours –  
Issues and Debates,  
Schizophrenia,  
Forensic Psychology,  
Relationships



Here are some examples of past papers from AQA



<https://www.aqa.org.uk/find-past-papers-and-mark-schemes>



Memory – Kim's game



# Memory – The Generation Game

<https://www.youtube.com/watch?v=4RpiDnoI1Fo>

# Social Influence

- How many jellybeans in the jar?
- Write down your guess.
- Can you influence others to change their mind?
- Did you manage to influence others?
- Did anyone refuse to be influenced?



# The Highest Paying Psychology Careers



**Psychiatrists**



**Industrial-Organizational Psychologists**



**Neuropsychologists**



**Clinical Psychologists**

**Psychology Careers**

## Other areas in which Psychology graduates are often employed include

- Advertising
- Armed Forces
- Banking and Finance
- Business Management
- Diplomacy
- Human Resources
- Nursing
- Pet Psychology
- Police
- Sales and Marketing
- Social Work
- Sports Psychology
- Psychometric Testing
- Psychotherapy
- Statistical Analysis

# Plenary

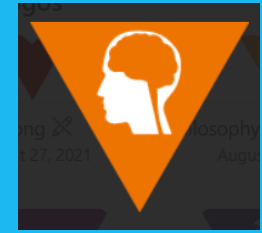
I hope you have a better idea about psychology A level now.

- **You should have a better understanding of the course.**
- **You have the answers to some key questions.**
- **I hope you are in a better position to make your choices**
- **You should know what the transition task is and where to find the details and help**





# Summer Tasks:



## Approaches – An academic study

Pick an approach:

- **(Approaches:**  
Humanistic/Psychodynamic/Bio  
logical/Cognitive/Learning –  
behaviourists & Social Learning  
Theory)
- Find out all you can about the  
approach and then create a  
PowerPoint slide  
presentation...5 mins long –  
font size 18 min. and min. of 5  
slides long...

## Research – A Memory Study

- Decide on a topic within the  
memory unit.
- Conduct an experiment on 5  
people (make sure that it is  
ethically sound).
- Write this up as a science  
experiment:  
(Aims/Method/Results/  
Conclusion)
- Answer: what does it tell us about  
the way our memories work
- Any questions email me at:  
[jayne.wright@furzeplatt.net](mailto:jayne.wright@furzeplatt.net)

Thank you for listening!

**WE LOOK FORWARD TO WELCOMING  
YOU TO THE FP PSYCHOLOGY TEAM!**

**MRS WRIGHT**



**A**MBITIOUS

**C**OLLABORATIVE

**H**APPY

**I**NTEGRITY

**E**NDURANCE

**V**ERSATILITY

**E**XCELLENCE