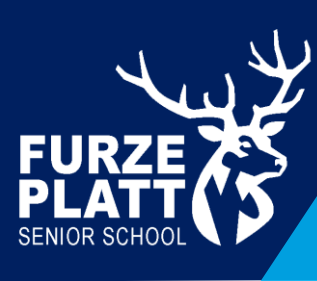
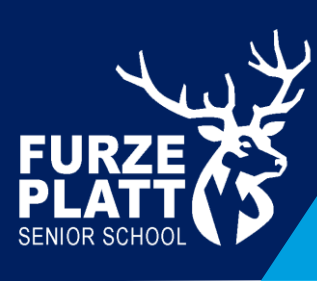


# Sixth Form Open Evening 2020



# Welcome





# What's it like being a student here?



**Daniel Juden**  
Head Boy



**Gemma Higley**  
Head Girl



**Daniel Brant**  
Deputy Head Boy



**Hollie O'Neill**  
Deputy Head Girl

# Structure of the Evening

**You will have the chance to attend  
five 20 minute subject presentations:**

7.00pm – 7.20pm

7.25pm – 7.45pm

7.50pm – 8.10pm

8.15pm – 8.35pm

8.40pm – 9.00pm

**A bell will go at the end of each session.**

# What is it like being a student here?



- Creative
- Supportive
- Rigorous

- Togetherness and community
- Independence
- Maturity
- Intelligent



# Value Added

## A-LEVEL RESULTS 2019

**97% PASS RATE**

☆  
**26%**  
OF GRADES  
~ ARE ~  
**A\*-A**  
☆

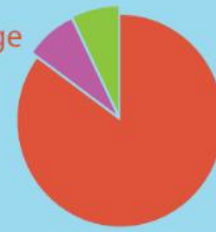
☆  
**53%**  
OF GRADES  
~ ARE ~  
**A\*-B**  
☆

☆  
**80%**  
OF GRADES  
~ ARE ~  
**A\*-C**  
☆

# SIXTH FORM DESTINATIONS 2019

**40 Different Universities**  
**78 Different Courses**  
**121 Students**

85% University/College  
8% Gap Year  
7% Apprenticeship



### Gap Year



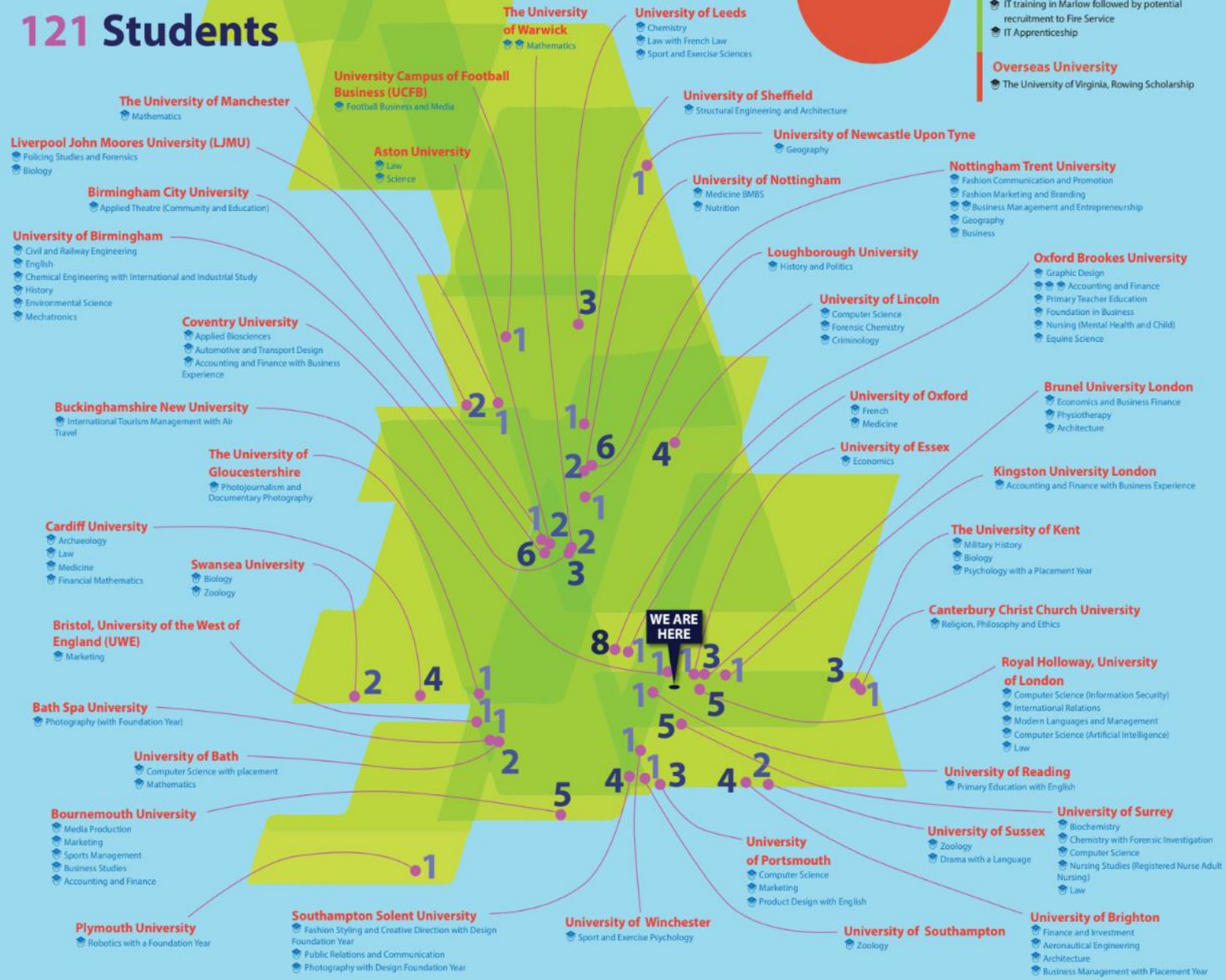
### Apprenticeships



- Finance and Business Management
- IT training in Marlow followed by potential recruitment to Fire Service
- IT Apprenticeship

### Overseas University

- The University of Virginia, Rowing Scholarship



# What can you expect from Furze Platt's Sixth Form?

- Excellent teachers
- To develop academically and have a high chance of gaining a place at the top universities
- An excellent support structure
- Outstanding careers guidance
- Opportunities to lead
- A dedicated tutor
- A broad range of extra-curricular activities





# What we expect from you

- Commitment to your courses
- A minimum of 15 hours independent study per week
- Excellent attendance
- Manage your time well
- Demonstrate a Growth Mindset and proactive approach personal development
- Adherence to the dress code
- Take an active role in the school and local community
- To support students further down the school



# Developing a well-rounded young person

Duke of Edinburgh Award  
National Citizenship Service  
Work experience  
Subject Captains  
House Captains  
Academic Mentors  
International Expeditions  
Charity Fundraisers  
Science Club  
Engineering Club  
Debate Club  
School Newspaper

Oxbridge Club  
Medical Society  
Eton College Summer School  
Robotics Club  
Music Clubs  
Drama Clubs  
Paired Reading  
Paired Maths  
History Club  
Board Games Club  
Sports Coaching  
Sports Recreation & Clubs

# Sixth Form Pathways

We offer over 30 different courses, which can be combined in different ways across different pathways:

1. Applied Pathway
2. Applied+ Pathway
3. Academic Pathway
4. Extended Pathway
5. Extended+ Pathway

# 1) Applied & Applied + Pathways

## Applied + Pathway

Minimum one BTEC and two further Level 3 courses, with a maximum of one subject selected from the Academic Pathway.

Maths / English GCSE retake as necessary

2 year course commitment

**Entry Requirement:** an average of a 5- in a student's 'attainment 8' subjects is needed, along with a grade 4 in both English and Maths (Attainment 8 Score 4.5 - 4.9).

**Available Qualifications:** BTEC and Applied Qualifications from Applied Pathway Qualifications list below. A maximum of one qualification for the Academic Pathway if desired.

## Applied Pathway

Minimum one BTEC and maximum two Applied Level 3 courses

Maths / English GCSE retake as necessary

2 year course commitment

**Entry Requirement:** an average of a 4- in a student's 'attainment 8' subjects is needed, along with a grade 4 in both English and Maths (Attainment 8 Score 3.5 - 4.49).

**Available Qualifications:** BTEC and Applied Qualifications from Applied Pathway Qualifications list below.

## Applied & Applied + Pathway Qualifications

These qualifications are also available to the Academic Pathway, Extended and Extended+ Pathways. Single qualification equivalent to one A-Level and Double qualification equivalent to two A-Levels

**Art, Craft and Design:** A-Level

**Business (Single):** BTEC Level 3 National Extended Certificate

**Criminology:** WJEC Level 3 Diploma

**Digital Media (Single):** Cambridge Technical Level 3 Extended Certificate

**IT (Single):** Cambridge Technical Level 3 Introductory Diploma

**Photography:** A-Level

**Product Design:** A-Level

**Sport (Single):** BTEC Level 3 National Extended Certificate

## 2) Academic Pathway

### Academic Pathway

3 linear A-Level qualifications

No AS-Levels

2 year course commitment

**Entry Requirement:**  
An average of 5 in a student's 'attainment 8' subjects is needed, along with a grade 5 in both English and Maths (Attainment 8 Score of 5 - 6.49).

**Available Qualifications:**  
Any from Applied Pathway and Academic Pathway Qualifications list below.

### Academic Pathway Qualifications

These qualifications are all A-Levels and are also available to the Extended and Extended+ Pathways.

**Biology**  
**Business**  
**Chemistry**  
**Computer Science**  
**Drama**  
**Economics**  
**English Literature**  
**French**  
**Further Maths**  
**Geography**  
**German**  
**History**  
**Maths**  
**Music**  
**Physics**  
**Physical Education**  
**Politics**  
**Psychology**  
**Religious Studies**  
**Spanish**

# 3) Extended Pathway

## Extended Pathway

3 A-Level qualifications  
(possible 4 if on the  
Extended+ Pathway)

Extended Project  
Qualification or one AS-  
Level, to be completed in  
Year 12

**Entry Requirement:**  
An average of 7- in a  
student's 'attainment  
8' subjects is needed,  
along with a grade 5 in  
both English and Maths  
(Attainment 8 score of 6.5  
- 7.75).

**Available Qualifications:**  
Any from the Applied  
Pathway, Academic  
Pathway and Extended  
Pathway Qualifications list  
below.

## Extended Pathway Qualifications

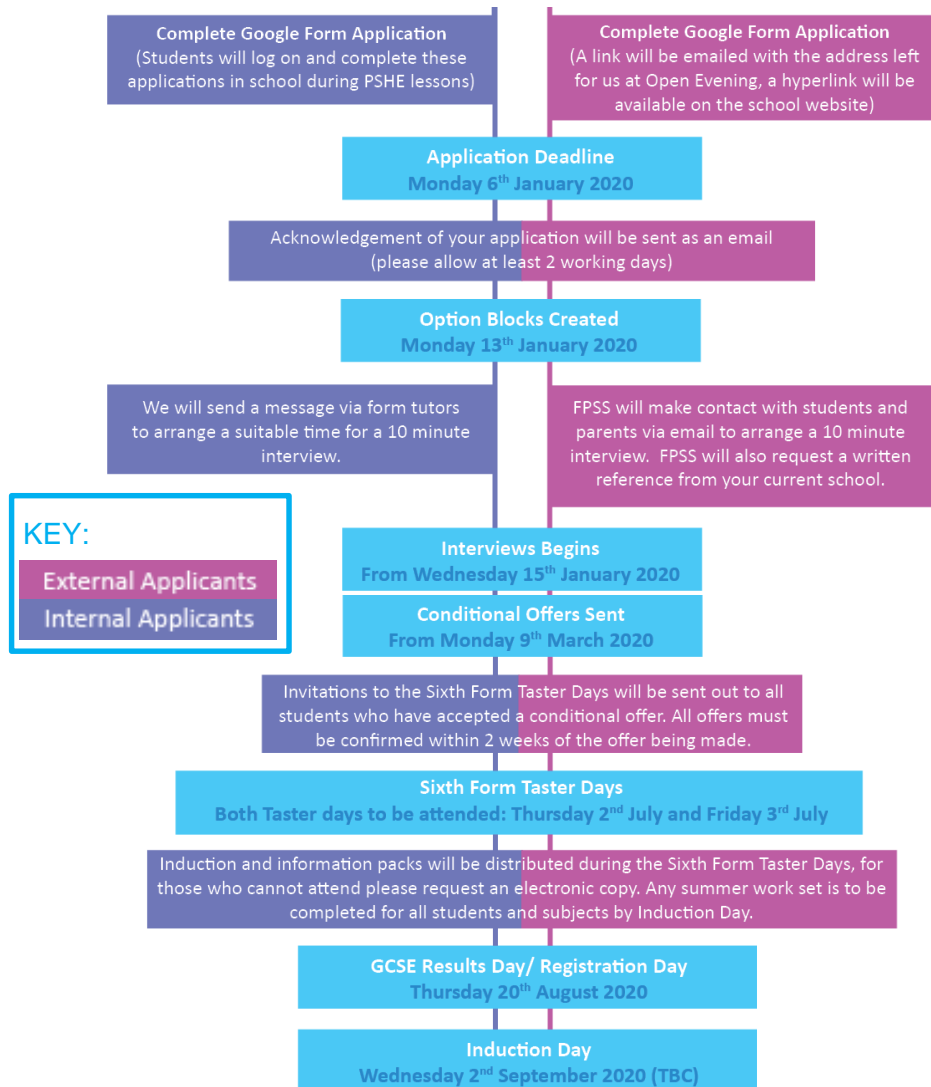
Chosen in addition to 3 A-Levels from  
the Applied/Academic Pathway(s)

**Extended Project Qualification**  
**Maths: AS-Level**  
**Further Maths: AS-Level**

# From here...

1. Visit all your chosen subjects this evening
2. Choose your pathway and subjects carefully
3. Apply to the Sixth Form through the Google Form
4. Work tremendously hard and get the best GCSE grades you can.

# Application Process & Key Dates



- **Monday 6<sup>th</sup> January 2020** - Deadline for applications
- **Monday 13<sup>th</sup> January 2020** - Option blocks built
- **From Wednesday 15<sup>th</sup> January 2020** – Interviews begin
- **From Monday 9<sup>th</sup> March 2020** – Conditional offers sent out
- **Thursday 2<sup>nd</sup> & Friday 3<sup>rd</sup> July 2020** – Sixth Form taster days
- **Thursday 20<sup>th</sup> August 2020** – GCSE results day & registration day
- **Wednesday 2<sup>nd</sup> September 2020** – Induction day (TBC)



Thank you!



# The signs of a productive evening!

1. What subjects/qualifications types might I be interested in studying?
2. What do these subjects entail, in DETAIL?
3. What are the entry requirements for these subjects?
4. Do these subjects adequately fit with your long term future career path?

# Subject Presentations

7.00pm – 7.20pm

7.25pm – 7.45pm

7.50pm – 8.10pm

8.15pm – 8.35pm

8.40pm – 9.00pm