

2021



SIXTH FORM PROSPECTUS
AND COURSE GUIDE

The Furze Platt Sixth Form: A Foundation for Excellence

Furze Platt Senior School's Sixth Form is one of the most popular and successful in the Windsor and Maidenhead area. Our focus, passion and commitment, combined with excellent teaching and a positive learning culture, mean our young women and men emerge highly qualified and well-rounded, ready to thrive at university or to excel in their chosen career.

The success of the Furze Platt Sixth Form is built on four key foundations:

- 1) A first-class curriculum combined with outstanding teaching
- 2) A dedicated focus on students as individuals, giving high-quality academic, pastoral, university and career support
- 3) A wide range of extra-curricular and leadership opportunities
- 4) Outstanding facilities throughout the school.

**'THE QUALITY OF
TEACHING AND LEARNING
IS STRONG. TEACHERS'
STRONG SUBJECT
KNOWLEDGE AND GOOD
BEHAVIOUR MANAGEMENT
SKILLS HELP PUPILS TO
LEARN EFFECTIVELY.'**

-OFSTED



Welcome

A very warm welcome to Furze Platt Senior School's Sixth Form. I hope this prospectus gives prospective students, parents and carers insight into our wonderful Sixth Form here at Furze Platt.

It is our aim to provide students with a stimulating and supportive environment that not only maximises academic achievement but also gives all young people who study here a uniquely rewarding and fulfilling experience. One of the defining characteristics of our Sixth Form is the warm and welcoming atmosphere and our students, including the many who choose us from other schools, find it easy to settle into life here at Furze Platt.

We are committed to being a fully comprehensive Sixth Form that offers a broad and varied curriculum specifically tailored to the requirements of our students. Our curriculum is made up of over 25 discrete subjects, all expertly taught by subject specialists, ensuring Furze Platt students receive excellent tuition throughout their time in Sixth Form. Class sizes are smaller than students

have been used to so far and teaching staff regularly monitor academic progress, with clear advice and guidance being given to ensure students maximise their potential.

Sixth Formers are given excellent opportunities to develop powerful independent learning skills, and our approach allows students to balance the independence and responsibility needed for them to be successful, regardless of their personal aspirations beyond the Sixth Form.

It is our ambition to equip students with the tools to achieve their aspirations, whether this is to progress to Higher Education, pursue an apprenticeship or embark on a career in employment. Whatever our students' aims, our dedication to working with students as individuals means Furze Platt Sixth Formers receive personalised, tailored guidance throughout their post-16 journey. Students are given high-quality, individualised guidance in the form of their personal tutor who is fundamental in ensuring their overall success. Whether by ensuring a smooth transition from Year 11 to the Sixth Form, in managing the shift towards a more independent style of working, or in making use of the extensive university and careers advice available, Furze Platt's pastoral system provides an environment in which Sixth Formers feel supported and empowered to reach their full potential.

We regard Sixth Form as the best part of a student's time in school and we aim to give all Furze Platt Sixth Formers the opportunity to enjoy this exciting and dynamic time in their education beyond the classroom as well as within it. The vibrant nature of Furze Platt Senior School means that as well as academic opportunities, we also offer a range of other exciting and enriching interests including sports, music, the arts, drama, tours, trips and visits or societies and clubs, many organised by Sixth Formers themselves.

I hope that our Sixth Form Prospectus and Course Guide allows you to discover more about what makes our Sixth Form so individual, stimulating and rewarding. I also hope that the next few pages help illustrate what life in these dynamic two years is like, the courses that we offer and more about the advice and support that will enable you to achieve your highest ambitions whatever those next steps may be.

If you have any further questions, then please feel free to speak to me or any of the Sixth Form team.



Mr P Ging
Head of Sixth Form

Curriculum & Teaching

Furze Platt offers an exceptional range of A-Level subjects and Level 3 applied courses. These are divided into five pathways – Applied, Applied+, Academic, Extended and Extended+. These are all taught in small classes by subject experts.

Entry Requirements

Here at Furze Platt we recognise how essential it is to match a Sixth Form pathway to a young person's needs and ambitions. We also recognise the inherent challenge of Level 3 study and so base our entry requirements on the government's 'Attainment 8' measure. In general, this is an average of a student's highest 8 GCSE grades, with a higher weighting given to English and Maths, meaning we can identify the right approach for our students from the very start.

The Extended and Extended+ Pathways

Entry to the Extended Pathway requires students to achieve an average of 7- across a student's 'Attainment 8' subjects, along with a grade 5 in both English and Maths. This is broadly equivalent to 3 grade 6's and 5 grade 7's across students' 8 highest GCSEs including English and Maths (Attainment 8 score of 6.5 - 7.75). This entitles students to choose three linear A-Level qualifications as well as the opportunity to take an additional fourth qualification such as a stand-alone AS-Level in Maths or Further Maths, or the Extended Project Qualification.

There may be some students who wish to choose the Extended Plus Pathway and study 4 A-Levels. This will be possible where students gain grade 8 or above in all, or almost all, their GCSE subjects including English and Maths (Attainment 8 score of 7.75 or above).

The Academic Pathway

In order to access the Academic Pathway, students will need to achieve an average of a 5 across a student's 'Attainment 8' subjects, along with a grade 5 in both English and Maths. This is broadly equivalent to 8 grade 5's across students' 8 highest GCSEs including English and Maths (Attainment 8 score of 5 - 6.49). This will enable students to study three linear A-Level qualifications, or any subjects from the Applied or Applied+ Pathway.



The Applied+ Pathway

The Applied+ Pathway is similar to the Applied Pathway but with the additional option to take a subject from our Academic qualifications. To qualify for this pathway, an average of a 5- in a student's 'Attainment 8' subjects is needed, along with a grade 4 in both English and Maths. This is broadly equivalent to 5 grade 4's and 3 grade 5's across students' 8 highest GCSEs including English and Maths (Attainment 8 score 4.5 - 4.9). This will enable students to join the Applied+ Pathway and to study one BTEC and two further subjects, with one selection permitted from the Academic Qualifications.

The Applied Pathway

The Applied Pathway represents the minimum requirement to enter Furze Platt's Sixth Form. To qualify for this pathway, an average of a 4- in a student's 'Attainment 8' subjects is needed, along with a grade 4 in both English and Maths. This is broadly equivalent to 4 grade 3's and 4 grade 4's across students' 8 highest GCSEs including English and Maths (Attainment 8 score 3.5 - 4.49). This will enable students to join the Applied Pathway and to study one BTEC and two further applied subjects.



The Five Pathways Model: Key

1: Determine which of the Five Pathways applies to you.

Extended + Pathway	Extended Pathway	Academic Pathway
<ul style="list-style-type: none"> 4 A-Level qualifications Extended Project Qualification or one AS-Level, to be completed in Year 12 <p>Entry Requirement: Where students gain grade 8 or above in all, or almost all, their GCSE subjects including English and Maths (Attainment 8 score of 7.75 or above).</p> <p>Available Qualifications: Any from the Applied Pathway, Academic Pathway and Extended Pathway Qualifications list below.</p>	<ul style="list-style-type: none"> 3 A-Level qualifications Extended Project Qualification or one AS-Level, to be completed in Year 12 <p>Entry Requirement: An average of 7- in a student's 'Attainment 8' subjects is needed, along with a grade 5 in both English and Maths (Attainment 8 score of 6.5 - 7.75).</p> <p>Available Qualifications: Any from the Applied Pathway, Academic Pathway and Extended Pathway Qualifications list below.</p>	<ul style="list-style-type: none"> 3 linear A-Level qualifications No AS-Levels 2-year course commitment <p>Entry Requirement: An average of 5 in a student's 'Attainment 8' subjects is needed, along with a grade 5 in both English and Maths (Attainment 8 score of 5 - 6.49).</p> <p>Available Qualifications: Any from Applied Pathway and Academic Pathway Qualifications list below.</p>

2: See which qualifications are available from your pathway. Check your predicted grades meet

Extended & Extended + Pathway Qualifications	Academic Pathway Qualifications	
<p>Chosen in addition to A-Levels from the Applied/Academic Pathway(s)</p> <p>Extended Project Qualification (AQA): At least a grade 6 in GCSE English language and a grade 6 in GCSE Maths.</p> <p>Maths AS-Level (Edexcel): At least a grade 6 in GCSE Maths.</p> <p>Further Maths AS-Level (Edexcel): At least a grade 7 in GCSE Maths.</p>	<p>These qualifications are all A-Levels and are also available to the Extended and Extended+ P</p> <div style="display: flex; justify-content: space-between;"> <div data-bbox="833 1302 1239 2252"> <p>Biology A-Level (AQA): At least a grade 5 in GCSE Maths and at least a grade 5 in GCSE Biology (if doing separate sciences) or at least a grade 5/5 in Combined Science.</p> <p>Business A-Level (AQA): At least a grade 5 in GCSE Business. Cannot choose Business and Economics A-Level together.</p> <p>Chemistry A-Level (OCR): At least a grade 5 in GCSE Chemistry, (if doing separate sciences) or at least a grade 5/5 in Combined Science.</p> <p>Computer Science A-Level (AQA): At least a grade 5 in GCSE Computer Science/Computing or a grade 5 in GCSE Maths.</p> <p>Drama A-Level (AQA): At least a grade 5 in GCSE Drama and if not taken at GCSE, successfully passing an audition/interview.</p> <p>Economics A-Level (Edexcel): At least a grade 5 in GCSE Business. Cannot choose Business and Economics A-Level together.</p> <p>English Literature A-Level (OCR): At least a grade 5 in GCSE English Language and grade 5 in English Literature.</p> </div> <div data-bbox="1277 1302 1759 2175"> <p>French A-Level (AQA): At least a grade 5 in GCSE French.</p> <p>Further Maths A-Level (Edexcel): At least a grade 7 in GCSE Maths.</p> <p>Geography A-Level (Edexcel): At least a grade 5 in GCSE Geography and a grade 5 in English Language.</p> <p>German A-Level (AQA): At least a grade 5 in GCSE German.</p> <p>History A-Level (Edexcel): At least a grade 5 in GCSE History and a grade 5 in English Language.</p> <p>Maths A-Level (Edexcel): At least a grade 6 in GCSE Maths.</p> <p>Music A-Level (AQA): At least a grade 5 in GCSE Music and working at equivalent to a Grade 5 level at the beginning of the course. Grade 5 theory is strongly recommended.</p> <p>Physics A-Level (AQA): At least a grade 5 in GCSE Physics (if doing separate sciences) or at least a grade 5/5 in Combined Science and at least a grade 6 in GCSE Mathematics. A combination with Maths A-Level is strongly recommended.</p> </div> </div>	
<p>Please note:</p> <ul style="list-style-type: none"> Achieving a grade 3 in GCSE English Language or Mathematics may not preclude you from joining the Sixth Form on the Applied or Applied+ Pathways. It is strongly recommended that students consider a re-sit of English Language if under a grade 4, even if English Literature is 4 or above. Some subjects may be taught at another Maidenhead Consortium school. Subjects can be withdrawn if there are insufficient numbers wanting to take the course. 		

Stage 5 Curriculum 2022-2023

Applied + Pathway

- Minimum one BTEC and two further Level 3 courses, with a maximum of one subject selected from the Academic Pathway
- Maths / English GCSE retake as necessary
- 2-year course commitment

Entry Requirement:

An average of a 5- in a student's 'Attainment 8' subjects is needed, along with a grade 4 in both English and Maths (Attainment 8 score 4.5 - 4.9).

Available Qualifications:

BTEC and Applied Qualifications from Applied Pathway Qualifications list below. A maximum of one qualification for the Academic Pathway if desired.

Applied Pathway

- Minimum one BTEC and maximum two Applied Level 3 courses
- Maths / English GCSE retake as necessary
- 2-year course commitment

Entry Requirement:

An average of a 4- in a student's 'Attainment 8' subjects is needed, along with a grade 4 in both English and Maths (Attainment 8 score 3.5 - 4.49).

Available Qualifications:

BTEC and Applied Qualifications from Applied Pathway Qualifications list below.

individual subject entry requirements before applying.

+ Pathways

Physical Education A-Level (AQA):

At least a grade 5 in GCSE P.E. or if not taken a grade 5 in GCSE Biology, or a grade 5/5 in Combined Science.

Politics A-Level (AQA):

At least a grade 5 in GCSE English Language. A grade 5 in GCSE History or Geography is strongly recommended.

Psychology A-Level (AQA):

At least a grade 5 in English Language. A grade 5 in Biology or 5/5 in Combined Science is strongly recommended. Cannot choose Criminology and Psychology together.

Religious Studies A-Level (OCR):

At least a grade 5 in GCSE Philosophy & Religion (PR) or if not taken a grade 5 in GCSE English Language or Literature if PR not taken.

Spanish A-Level (AQA):

At least a grade 5 in GCSE Spanish.

Applied & Applied + Pathway Qualifications

These qualifications are also available to the Academic Pathway, Extended and Extended+ Pathways. Single qualification equivalent to one A-Level and Double qualification equivalent to two A-Levels

Art, Craft and Design A-Level (Edexcel):

At least a grade 5 in GCSE Art & Design or equivalent. Students will be expected to have a tool kit with basic art media, details for this will be provided on induction day.

Applied Human Biology (Single) BTEC Level 3 National Extended Certificate (Pearson):

At least a grade 4 in GCSE Maths and at least a grade 4 in GCSE Biology (if doing separate sciences) or at least a grade 4/4 in Combined Science.

Business BTEC (Single) Level 3 National Extended Certificate (Pearson):

GCSE Business at grade 4 or above.

Criminology Level 3 Diploma (WJEC):

At least a grade 4 in GCSE English Language and a grade 4 in GCSE Biology, or grade 4/4 in Combined Science, or distinction in BTEC Science. Cannot choose Criminology and Psychology together.

Digital Media (Single) Cambridge Technical Level 3 Extended Certificate (OCR):

At least a grade 4 in GCSE English Language.

Fashion and Textiles A Level (AQA):

At least a grade 5 in Technology, Art or Photography GCSE.

IT (Single) Cambridge Technical Level 3 Introductory Diploma (OCR):

A grade 4 or Merit in an ICT related course and a grade 5 in English Language is recommended due to the extensive report writing on the course.

Photography A-Level (Edexcel):

At least a grade 4 in GCSE Art & Design or a grade 4 in a Technology subject or Media studies. All students must have a digital camera prior to beginning the course, details for this will be provided on induction day. A good working knowledge of Photoshop is required if you haven't studied Art at GCSE.

Product Design A-Level (AQA):

At least a grade 5 in Technology, Art or Photography GCSE.

Sport (Single) BTEC Level 3 National Extended Certificate (Pearson):

At least a grade 4 in GCSE P.E. or if not taken a grade 4 in GCSE Biology, or a grade 4/4 in Combined Science, or distinction in BTEC Science.

A Rough Guide to Sensible Subject Combinations

This rough guide is for general advice only and does not replace specific research and/or consultation with the universities for the courses in which you are interested. It is also essential that you choose subjects which you enjoy and which interest you.

University Course or Career	Suggested subject combination at A-Level	Notes
Accountancy	Maths, Business Studies or Economics with one other, but any combination is permitted.	Accountancy degree course provides exemption from 'foundation' accountancy exams, but is not necessary to enter the profession.
Administration, the Civil Service etc	Almost any combination but subjects include English, History, Economics, Geography, Government and Politics and a Foreign Language, or two languages for EU work and some diplomatic work, but Sciences for Scientific Branch careers.	Good class of degree needed to enter Diplomatic Service, which has a very competitive entry.
Agriculture, Agricultural Research, Land Surveyor	Biology, Chemistry and/or Physics, Geography.	
Architecture	Art usually recommended, though not always vital, but drawing experience and skills necessary. Maths very useful. English or Modern Languages and Physics all valuable. Also Design, History and Business Studies.	Must have GCSE Maths. Compilation of a portfolio is essential for entrance to most Architecture courses.
Banking, Finance, Insurance	Business Studies or Economics. Maths and a Language is very useful.	Finance and Banking degree courses available, but not mandatory for careers in this area.
Biochemistry, Zoology, Botany, Marine Biology, Micro-Biology, Biology	Chemistry, Maths and Biology desirable. Some courses emphasise Biology, some Chemistry. The most competitive demand strong mathematics.	Some of the most competitive courses welcome Mathematics at A-Level. For most Maths AS is sufficient but for Oxbridge A-Level is advantageous.
Business Studies	GCSE Maths is essential and A-Level Maths would be an advantage. Languages strongly recommended.	More and more universities are offering combined courses in Business Studies and Languages; in some cases a language at A-Level is a condition of entry.
Chartered Surveyor	Geography, Maths, Economics, Art and Design.	
Chemistry	Chemistry, Maths, Physics or Biology.	Oxbridge applicants should have Maths at A-Level.
Computer Science, Statistics, Numerical Analysis	Maths, Physics and a science / computer science as a third subject.	Good A-Level grades required for entry to popular degree course.
Design	Design Technology, plus Maths, Physics (engineering side) or Maths, Business Studies (commercial management side). Art if committed to a career in 'artistic' Design.	Drawing skills should be developed in the Sixth Form, especially if considering graphic/fashion/ interior design.
Economics	Maths, Economics or Business Studies, indeed any combination of Art or science subjects. It is not always essential to have A-Level Economics (many universities now offer introductory courses). Most demand A-Level Maths, or perhaps Maths AS-Level, others require evidence of a strong GCSE performance.	For Oxbridge and other leading Economics courses, Maths at A-Level is needed and for PPE course at Oxford Maths AS or A-Level can be advantageous.
Engineering	Physics and Maths essential for the vast majority of universities. Design is useful, so is Economics, Electronics, Business Studies and a Language.	Maths or Further Maths A-Level is expected for Oxbridge entry.
English, Drama, English and Drama	English and a Foreign or Classical Language or Classical Civilisation or History.	Single Honours English is always more competitive for entry to university than English combined with one or more other subjects. Drama or English and Drama can be very competitive.
Fine Art	Art, English or any combination.	Completion of Foundation Course needed as precondition of entry to degree course.
Geography (art emphasis)	Geography, History Economics, Business Studies, English, Languages, Art, one Science.	Slightly higher entry standards for Geography BA than for Geography BSc degree courses.

University Course or Career	Suggested subject combination at A-Level	Notes
Geography (science emphasis)	Geography, Maths or Physics, Biology or Chemistry.	A wide variety of careers available with a Geography degree.
Geology	Two sciences and/or Maths.	
History	History, Languages, English or Economics.	An A-Level Language is not essential to read History but is helpful, especially for Oxford. A wide variety of careers is available with a History degree.
History of Art	Art, History, English; a modern and/or classical language.	
Journalism	English and a Foreign language, but any combination of subjects will do.	There are degree courses in Journalism, but entry to them is very competitive and work experience is almost a pre-condition of admission.
Law	Any combination, though History, Maths, English, Government and Politics and/or Economics are useful. For Patent Law add a Science. (Art is not recognised as an entry qualification for Law School).	At Cambridge, Law (part 2) via Modern Languages or Classics (part 1) is popular. Law graduates need one year postgraduate study; non-law graduates, two years.
Leisure Industry, Sports Studies, Sports Science	Business Studies or Economics and either Chemistry or Biology or both.	Competitive entry to university. Record of commitment and success in sport very important.
Management Studies, Management Science	Maths, Economics or Business Studies.	Courses at university may overlap greatly in content with Business Studies courses.
Materials Science, Metallurgy	Chemistry, Physics and Maths. Design is useful.	
Maths, Maths with Physics, Theoretical Physics	Maths, Physics and a third.	Maths at A-Level or Further Maths, especially for Oxbridge.
Media and Communication Studies	English, a modern language.	Successful entry into the very competitive job market of journalism and broadcasting cannot be guaranteed with this qualification. Work experience in this area absolutely essential.
Medicine, Veterinary Science, Dentistry	Chemistry and Biology. Some medical schools like a non-science subject at A-Level. A good level of Maths is also important.	The minimum standard entry for Medicine depends on the university but is usually AAA* points or more; the same for Dentistry. For Veterinary Science work experience is essential. Interview most important!
Modern Languages (degree) not including Oriental Language	French, German, Spanish (any two) and English, History, Geography, Business, Art.	One Modern Language may be enough for a language degree and a single language is often combined with other subjects at university. Business Studies with a language is one of the fastest growing courses at universities. But two languages at A-Level widens the choice.
Music	Music A-Level and /or practical music skills (grade 8 on more than one instrument).	Practical music through Academies; Musicology at universities. Many combined courses, e.g. Music with German available.
Natural Sciences	Maths and two of Chemistry, Physics and Biology.	Maths or Further Maths A-Level is expected for Oxbridge entry. Physics and Chemistry routes applicants must also study Maths A-Level. For the Biological route, Maths AS may suffice, but A-Level is recommended.
Pharmacy	Chemistry, another Science.	Pharmacists must have a degree in Pharmacy from an approved School of Pharmacy.
Physics, Applied Physics, Mathematical Physics	Physics and Maths plus one other (Economics, Business Studies, Chemistry, Biology, Further Maths).	
Politics and International Relations	Any combination of social science, humanities or science subjects. Politics at A-Level not a requirement.	Universities often offer joint honours courses including Politics (such as Politics & Law or Politics & Sociology) that sometimes have a slightly lower grade requirement.
Psychology	No particular subjects required though the inclusion of a science subject or Maths is advantageous.	Approved Psychology degree recognised by BPS necessary, if wanting a career in Psychology. Competitive entry. Work experience very useful.
Teaching	English, a science, Maths i.e. a National Curriculum subject if interested in primary school teaching).	For Secondary teaching a degree the same as or at least containing the teaching subject is necessary, i.e. choose a degree at least some of the content of which is directly relevant to secondary education.
Theology and Religious Studies	(Philosophy & Ethics) Preferably an Arts course including English or History or both.	

Outstanding Facilities

In addition to specialist teaching rooms, Sixth Form students benefit from a dedicated Sixth Form area, housing the common room, teaching rooms and study rooms. There is a plentiful supply of desktop computers, and laptop computers are available for loan from our automated laptop bank. The school has recently invested heavily in many areas of the school, and boasts a brand new Theatre with gymnasium style seating – perfect for visiting speakers who regularly talk to Sixth Form students - a 3-storey Science and English block, a multi-purpose, professional drama studio, our own recording studio, and state of the art Maths block. The school benefits from enviable sporting facilities, including floodlit tennis/netball/basketball courts, a 60-station gym and a professional, floodlit all weather pitch.

Extra-Curricular & Leadership Opportunities

Forze Platt Sixth Form students are active and involved both across the school and the wider community. Students undertake a range of leadership roles including a variety of specific ambassador roles, through the House system as House Captains and as Head Boy, Head Girl and Deputy Head students. Sixth Formers organise and run a multitude of peer mentoring schemes as well as coordinate student voice through the running of the School Council. Sixth Form students also organise a significant number of clubs/societies and fundraising events, as well as participating in the Duke of Edinburgh Award Scheme, National Citizenship Service programmes and Eton College Summer School. Wednesday afternoons are dedicated to personal development and extra-curricular activities, with students choosing from a programme that includes all manner of sporting activities, as well as practical and cultural activities. Students' understanding of moral and ethical issues is enhanced through the tutor programme, which focuses on areas of current affairs and personal and cultural development.





Academic & Pastoral Support

Sixth Form students are extremely well nurtured and cared for at Furze Platt. Each student is placed in a small, friendly Sixth Form tutor group where their academic and personal development is overseen and supported. A comprehensive programme of advice and guidance exists for university entry, Apprenticeships and for career progression, including the school's own Careers and Higher Education Fair, the Careers Week for Sixth Formers, our Work Experience programme and individual interviews

with our Careers Advisor. Support with students' university application process is thorough and provided by form tutors, the Heads of Year 12 and 13, and the Head of Sixth Form. Students are given access to a range of platforms that they use to structure and plan their higher education and career aspirations, meaning our young people are regularly reviewing the relevance of studies based on clear goals.



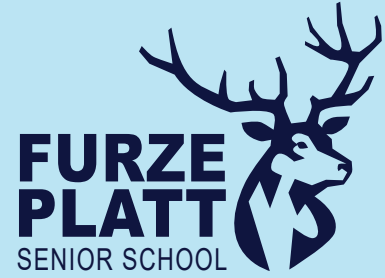


Progression from Furze Platt Sixth Form

Furze Platt Sixth Formers gain excellent qualifications that act as the gateway to Higher Education and career success. Approximately 80% of students progress to university, including several each year to Oxbridge and nearly 30% to the Russell Group of universities. Equal support is given to those choosing to begin their career straight from school, with a significant number taking up Apprenticeships in highly sought-after fields.

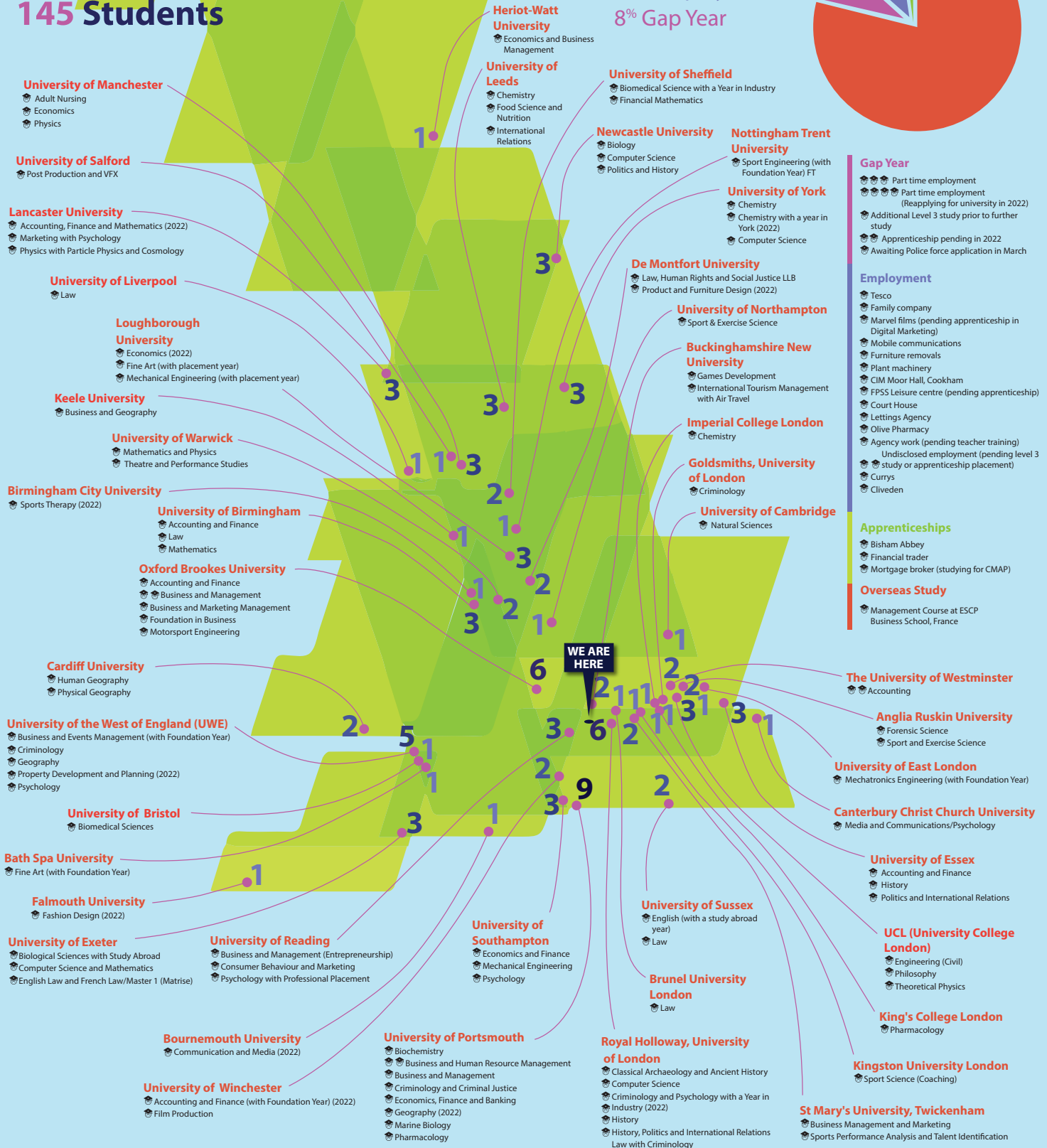
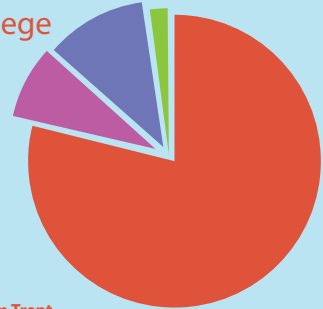
SIXTH FORM DESTINATIONS

— 2021 —

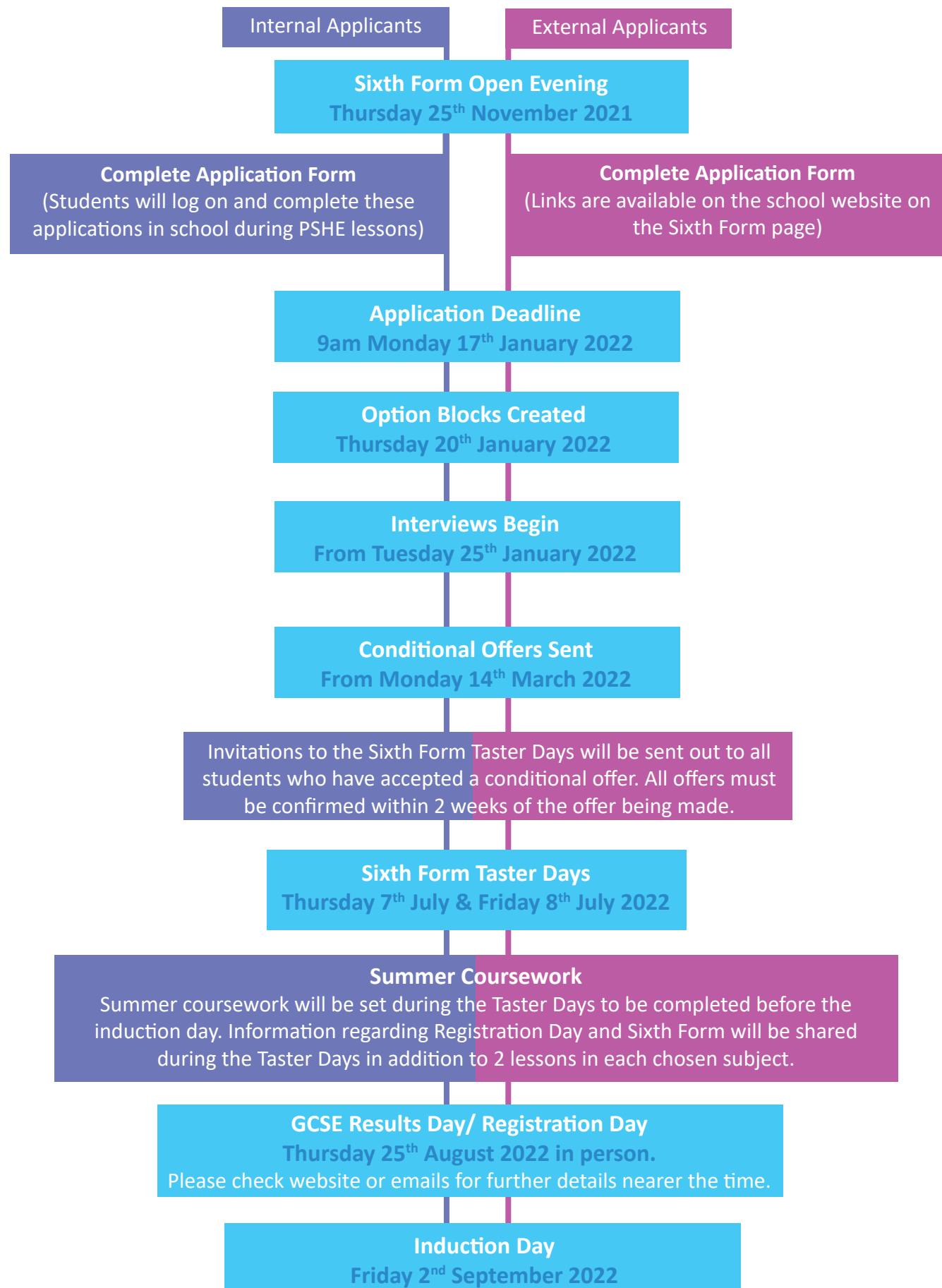


46 Different Universities
83 Different Courses
145 Students

79% University/College
2% Apprenticeship
11% Employment
8% Gap Year



Application Process & Key Dates



Contacts & further information

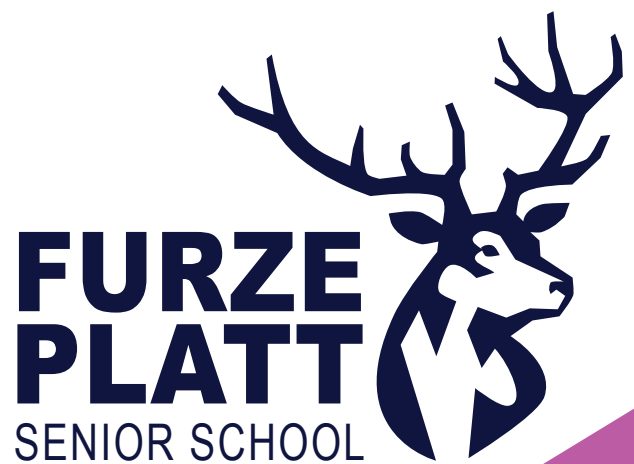
Full course information is available at:
www.furzeplatt.com

For further assistance please contact:

Sixth Form Administrator
Email: sixthform.admin@furzeplatt.net
Telephone: **01628 625308 ext.604**

Furze Platt Sixth Form
Furze Platt Senior School
Furze Platt Road
Maidenhead
Berkshire
SL6 7NQ

www.furzeplatt.com



The Sixth Form Team



Mr Peter Ging
Head of Sixth Form
Email: peter.ging@furzeplatt.net



Mrs Mary Pasa
Sixth Form Manager
Email: mary.pasa@furzeplatt.net



Mr Andrew Colmer
Assistant Head of Sixth Form
Email: andrew.colmer@furzeplatt.net



Miss Lisa Stirling
Assistant Head of Sixth Form
Email: lisa.stirling@furzeplatt.net