



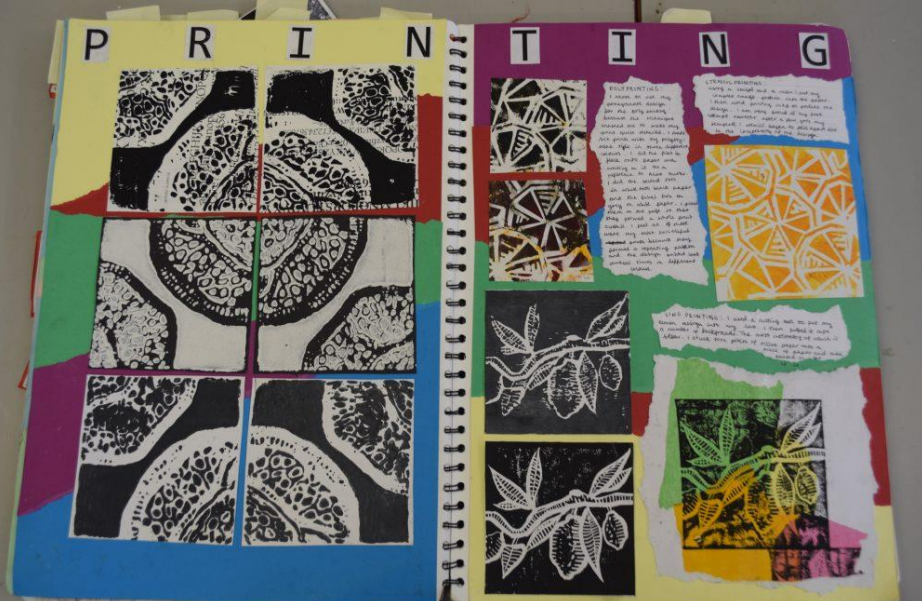
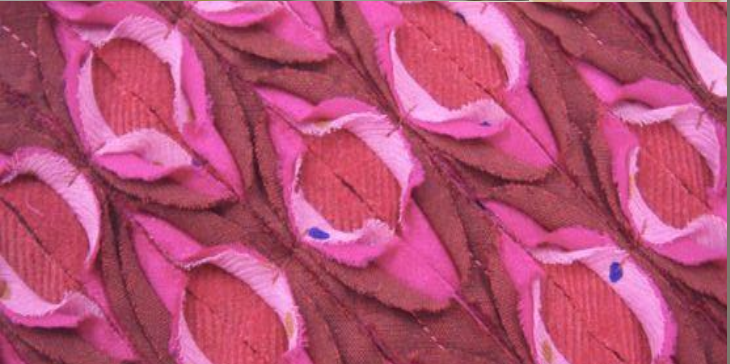
# Textiles

# Design

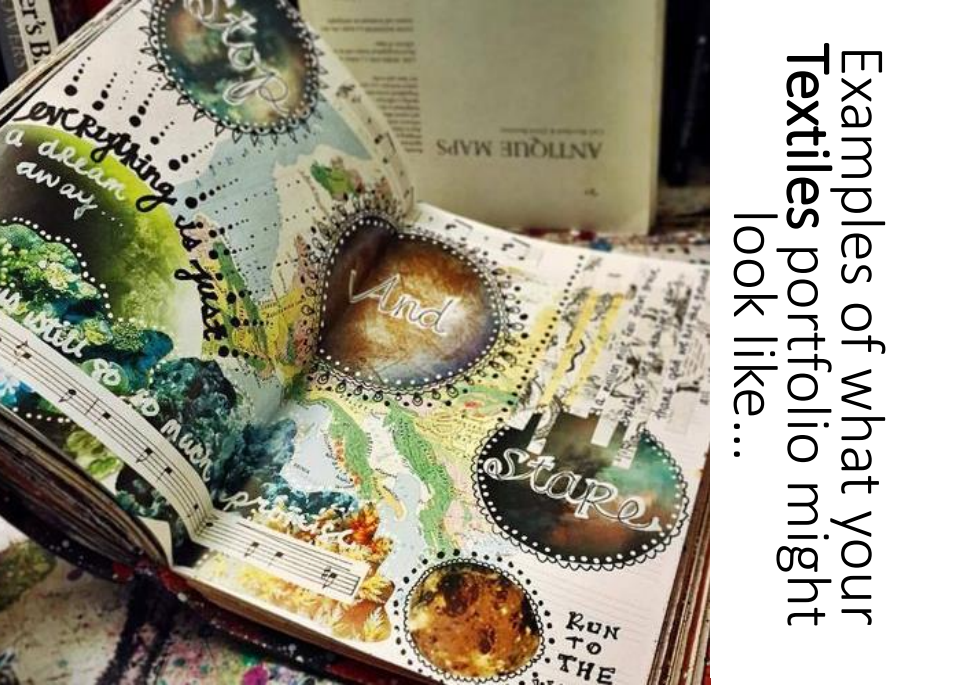
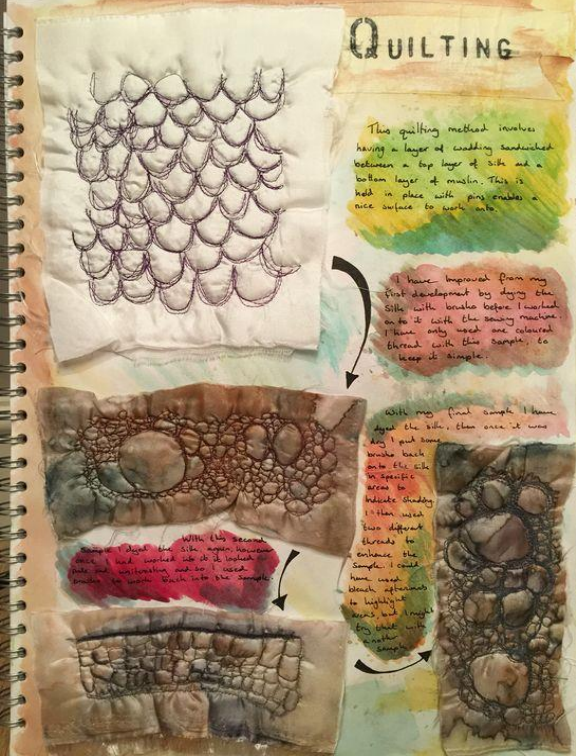
# GCSE AQA

# (8204)





Examples of what your **Textiles** portfolio might look like...



Examples of what your Textiles portfolio might look like...

Examples of what  
your **Textiles**  
outcomes might  
look like...



# AQA GCSE in Art and Design:8204: Textiles Design

## Areas of study:

Your chance to design products for woven, knitted, stitched, printed or decorative textiles. Areas of study include fashion design and illustration, costume design, constructed textiles, printed and dyed textiles and digital textiles.

Alongside improving your practical expertise, you'll learn how to: develop, refine and record your ideas

-present a personal response that realises your intentions

-improve your creative skills through the effective and safe use of media, materials, techniques, processes and technologies

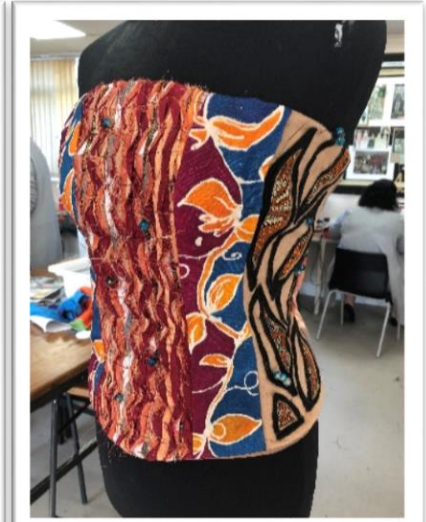
-successfully use visual language and the formal elements eg colour, line, form, shape, tone, texture

-use drawing skills for different needs and purposes.

**In Year 10:** we will do mini projects such as surface decoration techniques, fabric manipulation techniques, garment construction and design skills to build a sketchbook and portfolio of work.

**In Year 11:** we work on your externally set assignment – when we will explore, design and develop an outcome to produce in your timed practical exam.

Plan for course:



	Component 1: Portfolio	Component 2: Externally set assignment
What's assessed	A portfolio that in total shows explicit coverage of the four assessment objectives. It must include a sustained project evidencing the journey from initial engagement to the realisation of intentions and a selection of further work undertaken during the student's course of study.	Students respond to their chosen starting point from an externally set assignment paper relating to their subject title, evidencing coverage of all four assessment objectives.
How it's assessed	<ul style="list-style-type: none"> <li>• No time limit</li> <li>• 96 marks</li> <li>• 60% of GCSE</li> </ul>	<ul style="list-style-type: none"> <li>• Preparatory period followed by 10 hours of supervised time</li> <li>• 96 marks</li> <li>• 40% of GCSE</li> </ul>
	Non-exam assessment (NEA) set and marked by the school and moderated by AQA during a visit.	Non-exam assessment (NEA) set by AQA; marked by the school and moderated by AQA during a visit.