

FURZE PLATT SENIOR SCHOOL



CHOICES 2012

YEAR 10 AND 11 HANDBOOK

Furze Platt Senior School: a company limited by guarantee
Registered in England: Company Number: 7834715
Registered Office: Furze Platt Road, Maidenhead, Berkshire SL6 7NQ

CONTENTS

INTRODUCTION

SECTION 1 - CORE SUBJECTS

GCSE Biology, GCSE Chemistry and GCSE Physics
GCSE Core Science & GCSE Additional Science
BTEC Applied Science
English
English Literature
Mathematics
OCR National ICT
Religious Studies
PSHEE & Citizenship
Physical Education

SECTION 2 - OPTION SUBJECTS

BTEC Art & Design
Business Studies
Child Development
Computing
Dance
Drama
Design & Technology - Food Technology
Design & Technology – Graphic Products
Design & Technology - Resistant Materials
Geography
City and Guilds Hair Dressing
History
Modern Foreign Languages – French
Modern Foreign Languages – German
Modern Foreign Languages – Spanish
BTEC Motor Vehicle Studies
Music
Physical Education
BTEC Public Services
BTEC Work Skills

SECTION 3 - THE OPTION FORM

INTRODUCTION

Qualifications

Furze Platt offers four types of qualification in Years 10 and 11 - GCSEs, BTECs, City and Guilds and OCR Nationals.

GCSEs are **general qualifications** which offer a mix of academic and practical studies in one course. There is an examination at the end of every GCSE course and a series of Controlled Tests during the two years.

BTEC, City and Guilds and OCR National qualifications are more **vocational**. They often look at the practical application of skills in the work place. Grades are awarded for the various assignments that are set during the course. In some courses there is also an external assessment which makes up around 20% of the marks. Students build up a portfolio of evidence which shows they have met the required standards.

The government has recently published a list of the vocational qualifications which it believes are of equal status to GCSEs. BTEC Applied Science, BTEC Art and Design and ICT OCR National are on this list and can therefore be counted as GCSE equivalents.

We also offer 4 other vocational courses which have not been recognised as equivalent to GCSE, these are:- Work Skills, Motor Vehicles, Hair Dressing and Public Services. Some of these are offered in partnership with Berkshire College of Agriculture. We believe that these are high quality courses which provide opportunities to students which will help them gain useful skills and employment. The qualifications, although not recognised in school performance tables, are well regarded by employers and may give some students an advantage in a very competitive jobs market.

The English Baccalaureate

To recognise achievement across a range of subjects the Government has introduced the English Baccalaureate. To achieve a Baccalaureate, students must achieve at least a C grade in **English, Mathematics, two sciences, a Language** and either **History** or **Geography**.

Whilst it is not yet clear how important employers or universities will regard the English Baccalaureate, we recommend that students seriously consider opting for these subjects if they feel they will succeed and enjoy studying them.

The English Baccalaureate will be discussed with students individually during their options interviews.

Science in Years 10 and 11

We offer three Science courses in Years 10 and 11

GCSE Triple Award Science - Students take separate GCSEs in Biology, Physics and Chemistry. Triple Science runs for 11 periods per fortnight and is aimed at students who are most able and very committed to the study of Science. These students will be likely to study science at A Level and may well have plans for a future career using their science qualifications.

GCSE Double Award - Students study a combined science course which covers Chemistry, Biology and Physics. This is awarded with 2 GCSEs. Double Science runs for 9 periods per fortnight. It is aimed at students of high to average ability in science, who although may like science and be good at it, may well not be considering it as a future option. Students who study Double Science will also be able to study ICT for 2 periods per fortnight. Students who opt for Double Science will still be able to take A level Science in the sixth form provided they achieve two grade Bs at GCSE.

BTEC Applied Science - Students study Physics, Biology and Chemistry with a particular focus on science in everyday life and in the work place. This is a BTEC extended certificate course and is recognised as the equivalent of one GCSE. Students that study BTEC Science will also be able to study for a qualification in ICT.

It is vital that students tackle the science course which is most suitable for them if they are to succeed. Your child's Science teacher will make a recommendation as to the courses which are most appropriate. You may also state a preference on the options form. These will be discussed during the options interviews.

Further information on our science courses can be found later in this publication.

Subjects in Years 10 and 11

All students cover the **common** curriculum which includes English, Maths, Science, PE, RE, and Citizenship/PSHEE.

There are another four blocks of time in which students can take up to four additional option subjects. Most subjects fill a single block of time. Some subjects require two blocks of time.

Choosing the right subjects

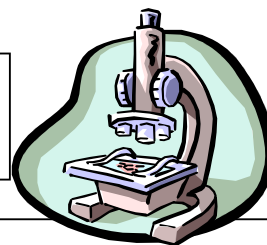
- We want all of our students to succeed and to be well qualified by the end of Year 11.
- We want them all to have a broad range of opportunities open to them.
- We want them all to have enjoyed their education.

For these reasons we recommend that most students should study **a broad range** of subjects in order to keep their options open. They should **play to their strengths** and they should choose subjects that **they will enjoy**.



COMMON SUBJECTS

GCSE Biology, Chemistry and Physics **(TRIPLE AWARD) AQA 4401, AQA 4402 & AQA 4403**



Introduction:

This course is comprised of a GCSE in Physics, Biology and Chemistry. Triple Award science is aimed at the most able scientists who can demonstrate real commitment to the subject. Triple Science is taught for 11 periods per fortnight and is an accelerated course. Students will need to be good at examinations and retain a great deal of information.

Why do I do Science?

Science is a common subject which all students have to study; it helps you to understand the world around you. Your Science GCSE grades will be important for many courses and careers, as well as forming a foundation to AS/A2 Science

What will I gain from studying Science?

Students will increase their knowledge of scientific ideas and develop new practical skills. Studying Science helps students to understand and make their own judgements about technological advances, the environment, living organisms, current affairs and the world around them.

What will I do in Science?

Through Science, students will:

- Observe demonstrations;
- Carry out practical experiments;
- Research information;
- Use ICT to handle data;
- Learn how to apply their knowledge in new areas;
- Communicate scientific ideas;
- Use calculations to predict what will happen.

How will I be assessed in Triple Award Science?

Students study Science A, Additional Science and Further Science in Biology, Chemistry and Physics.

Each scientific discipline is assessed by examinations, worth 75% of the overall GCSE in the June of year 11.

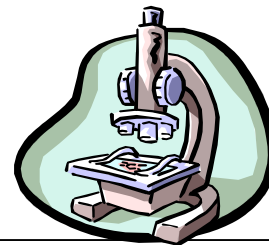
The remaining 25% of each GCSE will be an internally assessed practical assignment, two written examinations and continual assessment of practical skills throughout the course. The students will be awarded three separate GCSEs in Chemistry, Physics and Biology.

Going on to Study Science At Key Stage 5:

Students achieving a minimum of a grade B in the Science subject they want to study and a B in Maths, will be eligible to study Science A levels.

GCSE Science A & GCSE Additional Science

AQA 4405 & AQA 4408



Introduction:

Double Award Science is aimed at students of high to average ability. It is a combined science course covering Biology, Chemistry and Physics. Students will study Double Science for 9 periods per fortnight.

Why do I do Science?

Science is a common subject which all students have to study; it helps you to understand the world around you. Your Science GCSE grades will be important for many courses and careers, as well as forming an essential foundation to AS/A2 Science subjects.

What will I gain from studying Science?

Students will increase their knowledge of scientific ideas and develop new practical skills. Studying Science helps students to understand and make their own judgements about technological advances, the environment, living organisms, current affairs and the world around them.

What will I do in Science?

Through Science, students will:

- Observe demonstrations;
- Carry out practical experiments;
- Research information;
- Use ICT to handle data;
- Learn how to apply their knowledge in new areas;
- Communicate scientific ideas;
- Use calculations to predict what will happen.

How will I be assessed in Double Award Science?

Students study Core Science, a mixture of Biology, Chemistry and Physics. The core exam is worth 75% of the overall GCSE, the remaining 25% being made up from an internal assessment.

Students then go on to study Additional Science, a mixture of Biology, Chemistry and Physics. The exam is worth 75% of the overall GCSE the remaining 25% being made up from an internal assessment.

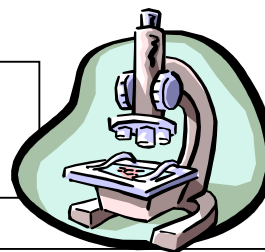
The internal assessment for both Core and Additional Science is a practical assignment, two written examinations (for both Core and Additional, so 4 in total) and continual assessment of practical skills throughout the course.

Going on to Study Science At Key Stage 5:

Students achieving a minimum of a grade B in both Science A and Additional Science and a B in Maths, will be eligible to study Science A levels. Since they will not have studied Further Science they will be expected to do extra study over the Summer between Year 11 and 12 to prepare.

BTEC Applied Science

Edexcel



Introduction: BTEC Applied Extended Certificate Science is the equivalent of one GCSE. It is aimed at students who will benefit from assessment which is mainly based on portfolio work and ongoing assignments.

Why do I do Science?

Science is a common subject which all students have to study; it helps you to understand the world around you. BTEC science addresses this directly, with every lesson linked to the outside world.

What will I gain from studying BTEC Applied Science?

BTEC Applied Science is a hands-on approach to science. You will learn the core material studied in the GCSE, but also look at applications of science in the world. It will help you to make sense of the world around you and help you to develop skills which future employers will highly value.

What will I do in Science?

- Carry out experiments and investigations for your assignments.
- Listen to guest speakers who will come and talk about the science you are learning.
- Visit scientific places of interest.
- Research scientific discoveries and theories.
- Complete assignments as reports, presentations, powerpoints, posters, videos and leaflets.

How will I be assessed in BTEC Science?

You will be able to attain a BTEC Extended Certificate which is equivalent to 1 GCSEs (A* –C).

You will study core Biology, Chemistry and Physics through assignments. You will be required to carry out practical work and produce a portfolio of work as proof of understanding of the assignments and to show the research you have carried out. This will be worth 80% of the award.

The final 20% of the BTEC award will be assessed through external examination in Year 11.

The marks from the examination and from the portfolio are added together to give an overall grade of distinction, merit or pass level equivalent to A*-C at GCSE.

Further Study at KS5:

Students can go on to other institutions to study BTEC Level 3 Science which is accepted by UCAS for entry to university.

GCSE ENGLISH

AQA 4700



Introduction:

You will continue your study of English through Years 10 and 11.

Why do I study English?

How many things are you asked to read or write in a single day? Your reading and writing skills affect how well you do in almost every area of your school life and they continue to be important whether or not you continue with full-time education.

What will I gain from studying English?

English at GCSE helps you practise, improve and develop your reading and writing skills as well as your speaking and listening skills. All of which are important in a job, career, further and higher education establishments.

What will I do in English?

Through class discussion, group work and individual written assignments you will learn about spoken language, Shakespeare, poetry, modern and pre-19th century fiction. You will also improve your skills in writing to explore, imagine and entertain; describe, inform and explain; argue, persuade and instruct; analyse, review and comment.

How will I be assessed in English?

The final GCSE grade consists of:

3 pieces controlled assessment:	40%
Speaking and listening assessment:	20%
Written examination:	40%

During the course you will complete controlled assessment tests in the following areas:
i) Creative writing 15% (ii) Extended reading 15% (iii) Spoken Language Study 10%

You will also complete speaking and listening assessments throughout the course.

What are the important deadlines in English?

In Year 10 there will be controlled tests. These will be set by your teacher and you will be informed of these in advance.

In Year 11, you will focus on preparing for your examination.

GCSE ENGLISH LITERATURE

AQA 4710



Introduction:

All of you will study English Literature through Years 10 and 11.

Why do I study English Literature?

English Literature is all about reading novels, plays and poems and writing about them. In lessons we focus on what you think about what you read. Your response to what you read is essential; you will develop your thinking skills through this subject. Through Literature you will also develop your skills in writing about the things you read in a way that can help you in many other subjects.

What will I gain from studying English Literature?

It will increase your ability to form an argument, think for yourself and show that you have the skill to understand a range of writing and to communicate your understanding to others. Many employers and higher education establishments see English Literature as an important subject.

What will I do in English Literature?

You will read, discuss and write about books and poetry. You will also improve your skills in building an argument and finding supporting evidence for your ideas.

How will I be assessed in English Literature?

You will have 1 coursework assignment: 25%
A written examination: 75%

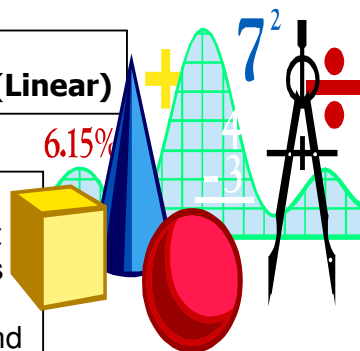
What are the important deadlines in English Literature?

In year 10 you will complete one piece of coursework on Shakespeare and the Literary Heritage. This piece of coursework will be a controlled assessment task and you will complete it in school. Your English teacher will tell you when you will complete it and you will be informed of the date in advance.

In year 11 you will prepare for the Literature examination.

GCSE MATHEMATICS

Edexcel (Linear)



Introduction:

In Years 10 and 11 there are 2 levels of study, tailored to suit the mathematical potential of the individual. Your progress is monitored throughout the course and transfer to a different level may be possible in full consultation with your teacher and parents. Most students will sit their examinations early, in the November or of Year 11.

Why do I do Mathematics?

Mathematics, in addition to providing numeracy and functional skills for everyday life, is the key to careers in computing, engineering, science (including medicine) and finance.

What will I gain from studying Mathematics?

Maths provides you with skills in logic and analytical thought. It develops the recognition of pattern and the ability to produce systematic and rigorous argument.

What will I do in Mathematics?

You will study number, algebra, geometry, measures, statistics and probability. You will also aim to recall, select and apply your knowledge of Mathematics and to interpret, analyse and solve problems in a range of contexts.

How will I be assessed in Mathematics?

There are two exam papers (50% each), one with a calculator and one without, that can be sat at Foundation or Higher level. Problem-solving skills will also be assessed along with your ability to communicate well. Some students will go on to study GCSE Further Mathematics, GCSE Statistics or Functional Skills, whilst others will aim to improve their grade.

INFORMATION TECHNOLOGY

OCR Nationals Level 2 Qualifications



Introduction:

The OCR Nationals are a suite of qualifications that focus on the practical application of information technology.

Why do I do ICT?

OCR Nationals are ICT qualifications which prepare students for the real world of work and further education.

What will I gain from studying ICT?

OCR Nationals qualifications are designed to stimulate students' creativity and develop real-world practical skills that will motivate learning across a wide range of subjects.

What will I do in ICT?

You will

- ✓ Develop your ability to select and use digital applications appropriately and produce high quality outcomes.
- ✓ Improve your ability to use digital applications for achieving a goal, rather than for their own sake.
- ✓ Enhance your creativity and communication.
- ✓ Gain some of the skills that you will need in the workplace or in further education or training.
- ✓ Develop project management skills.
- ✓ Reflect critically on your own and others' use of digital applications.
- ✓ Work electronically rather than on paper.
- ✓ Use an electronic assessment tool (JAS pupil) to monitor your progress and gain focused feedback from your teachers
- ✓ Use the departmental website to access your tasks anywhere in the world and at anytime.
- ✓ Have fun working on creative and different aspects of ICT

How will I be assessed in ICT?

The OCR National has been recognised as equivalent to one GCSE.

What are the important deadlines in ICT?

Assessment takes place continuously so your teachers will issue deadlines as the course progresses; however, the faster you complete the modules of work and assessment tasks, the more awards you will be able to gain.

GCSE RELIGIOUS EDUCATION

AQA 4055



Introduction:

RE is about people; their beliefs, behaviour, attitudes and relationships. As well as learning about how other people view life, you will have the opportunity to question and reflect on your own attitudes and behaviour, which is important.

Why do I do Religious Education?

A qualification in RE is not only a measure of your academic ability, it shows that you have an understanding of others which makes it particularly useful for all jobs which involve dealing with the general public. You will be looking at issues surrounding the world today and use different views to evaluate them.

What will I gain from studying Religious Education?

You will develop your skills of investigation, interpretation, evaluation and analysis. These are central to any work in RE. You will also be encouraged to empathise (see things through the eyes of others), to reflect on and express your own feelings, ideas and views on issues. Attitudes such as respect, care and concern (for yourself and others) are promoted through the study of RE. These important values will help you in all areas of your life.

What will I do in Religious Education?

All students will follow the AQA GCSE syllabus.

In Year 10, students will look at Religious Philosophy and Ultimate Questions. This will include the following units:

- The Existence of God
- Miracles
- The problem of evil and suffering
- Immortality
- Science and Religion

In Year 11, students will look at Religion and Morality. This will look at the following units:

- Medical Ethics
- Attitudes to the Elderly and Death
- Attitudes to Crime and Punishment
- Attitudes to world poverty

How will I be assessed in Religious Education?

You will have two exams at the end of Year 11, testing both the Philosophy and Morality side of the course.

What are the important deadlines in Religious Education?

There are no deadlines as RE is purely an exam based subject.

PSHEE and CITIZENSHIP



Introduction:

- PSHEE/Citizenship is part of the core curriculum and is studied for one hour per week.
- It includes PSHEE (Personal, Social, Health and Economic Education), Citizenship and Careers Education.

Why do I do PSHEE & Citizenship?

- To consider and discuss a wide variety of important and topical issues
- To help develop your understanding of society and yourself.
- To think about what you want to do in the future.

What will I gain from studying PSHEE & Citizenship?

You will

- Increase your knowledge and understanding about a variety of important and topical issues to do with health, finance, citizenship and the world of work.
- Gain experience in discussion and listening skills and begin to develop an enquiring mind.
- Develop your knowledge of your personal qualities, an appreciation of the views of others and an ability to reach informed decisions about your future.
- Develop good relationships and respect the differences between people.

What will I do in PSHEE & Citizenship?

The work you do will include the following topics

- Safe and healthy lifestyle – e.g. drug and sex education.
- Financial awareness and understanding.
- Citizenship – including the work of government, the law, our rights and responsibilities, the media, global issues.
- Preparation for the world of work and the choices you need to make at the end of Year 11.

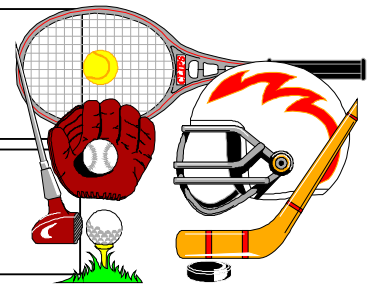
How will I be assessed in PSHEE & Citizenship?

- There is no formal assessment or examination in this subject but there will be regular assessment activities in lessons.

What are the important deadlines in PSHEE & Citizenship?

- There is no coursework as such but there will be times during the course that you will be asked to complete tasks such as providing material from the media to discuss in lessons or carrying out research.

PHYSICAL EDUCATION



Introduction:

All pupils will follow the core physical education programme, during which there are 3 hours of core PE over the 2 weeks.

Why do I do Physical Education?

Keeping yourself fit and healthy is vital! You will participate in a variety of activities that will develop different elements of fitness – ranging from your mobility and agility to developing your actual skill level. It is very important that you participate in PE lessons as it is a “core” lesson within the National Curriculum.

What will I gain from Physical Education?

Sport and PE develops many skills and attributes. Not only will you have the opportunity to improve your own personal skill levels at many activities, but you will also learn the importance of good sportsmanship and the importance of working with others within a team. Hopefully you will carry on with some sport or activity outside of school too. We also introduce you to some activities that are not part of the curriculum lower down in the school e.g. trampolining and volleyball.

What will I do in Physical Education?

You will continue with module-based activities as in previous years. Greater emphasis will be placed on:

- Scoring and judging
- Strategies and tactics
- Competitions
- Self-analysis and evaluation

How will I be assessed in Physical Education?

Your teachers will assess your progress in all areas of the subject throughout the two years using GCSE P.E. criteria.

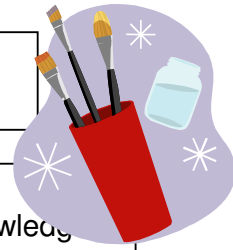
What are the important deadlines in Physical Education?

There are no specific deadlines in this subject because assessment is continuous.



OPTION SUBJECTS

BTEC FIRST IN ART AND DESIGN



Introduction:

BTECs are vocationally related qualifications, where learners develop knowledge and understanding by applying their learning and skills in a work-related context. They engage students in taking responsibility for their own learning and develop essential work-related skills, such as working to deadlines and presenting information effectively. BTEC Firsts motivate students at Furze Platt and opens doors of progression into further study and education or the workplace.

The EDEXCEL Level 2 BTEC First Certificate In Art and Design is taught over two years in a single option block (around 5 hours per fortnight). A BTEC First Certificate in Art Graphics or BTEC First Certificate in Art Textiles course is also on offer.

Why do I do Art and Design?

If you want to develop or learn new skills in a creative environment then look no further! This is an excellent course which will allow you to gain an insight into lots of different areas of Art and Design, including :-

- 2D and 3D Design
- Fine Art
- Contextual Studies (Art History)
- Digital media and photography
- Textiles
- Fashion Design
- Graphic Design

You will have the opportunity to visit galleries and exhibitions, work on 'live' project briefs as well as taking trips to major art cities such as New York, Paris, Barcelona and Venice.

What will I gain from studying BTEC's in Art and Design?

This course is equivalent to one GCSE's grades A*-C

What will I do in a BTEC First Certificate in Art and Design?

Two core units:-

- 2D and 3D Visual Communication, (basic art skills drawing, painting and 3-D sculptures)
- Contextual References in Art and Design, (art history, essay writing, making movies!)

BTEC FIRST IN ART AND DESIGN

CONTINUED



One specialist unit:-

Art students

- Working with Visual Arts Briefs or

Graphics Students

- Working with Graphics Briefs or

Textiles Students

- Working with Fashion Design Briefs

How will I be assessed in Art and Design?

It's continual assessment throughout the 2 years, with one externally set unit of work which is completed over 10 hours of lesson time in a 'controlled environment'.

You will be assessed at the end of each unit of work and will be awarded a PASS, MERIT or DISTINCTION grade.

What are the important deadlines in Art and Design?

Deadlines are very important in this course and at the beginning of a new project brief a deadline will be given which must be met.

Student Progression

BTEC Certificates offer direct progression on to the BTEC National programme, which is on offer within FPSS Sixth Form. On completion of a BTEC National, students can progress to a BTEC Higher National, BTEC Foundation Degree programme or on to a specialist degree of their choice.

A BTEC First also prepares students for employment in their chosen career such as an artist, illustrator, photographer, web designer, graphic designer, interior designer, fashion designer, product designer, multi-media, designer, architect, etc.

Speak to Mrs Mulhern for more details or log onto the Edexcel website.

GCSE BUSINESS STUDIES AQA 4130



Introduction:

No matter what you do in life you will interact with businesses. Most of you will work for a business and all of you will buy goods and services from businesses. Apart from being a great qualification to have for university and employers, we teach you to be smarter in your dealings with business, making and saving you money through life.

Why do I do Business Studies – What some of our students have said:

“I have enjoyed studying business and am planning to take Business at A level and at university. I like the way we always look at real businesses in the real world”. “The best thing about business is being encouraged to use ICT to learn. They have great activities that I can do at home as well.”

What will I gain from studying Business Studies?

Business Studies gives you an understanding of the world around you and the part that people and businesses play in the world. By giving you skills like team work, presentation, analysis and evaluation you are likely to do better. Knowing about how employers recruit and structure their business will give you a much better chance of getting a good job. It also helps you to set up your own business if you want.

What will I do in Business Studies?

You will investigate businesses of all types through using case studies and news clips. You will have to come up with solutions to business problems and present your findings. You will use the internet to carry out research into businesses and use computers to produce professional business reports and documents.

You will be required to work individually, as one of a pair and in groups. You will learn to give presentations and take part in discussions. It is an active, ‘doing’ subject.

How will I be assessed in Business Studies?

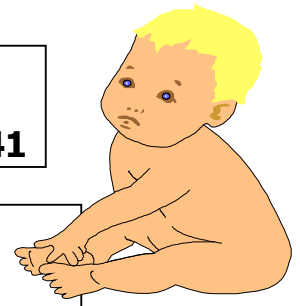
You will take two examinations, one on setting up a business and one on running a business. These two examinations account for 75% of the final mark. You will also carry out a controlled assessment where you will investigate one business in depth and this accounts for 25% of the final grade.

What are the important deadlines in Business Studies?

Both 1 hour examinations are taken in May of Year 11. You will do your in depth study of a real business in the summer term of Year 10.

GCSE CHILD DEVELOPMENT

OCR J441



Introduction:

This two year GCSE course involves the study of children aged 0-5 years. You will learn about how children develop socially, emotionally, intellectually and physically. You will also learn about the role of the family and professionals in the upbringing of children, about health and healthy eating and about pregnancy and childbirth.

Why should I choose Child Development?

The work in Child Development provides opportunities to develop your research and investigational skills, to use ICT and to observe young children.

What will I gain from studying Child Development?

In addition to developing the parenting skills required in later life, this subject would be very useful to those who want a career in child care, social work, teaching or nursing.

What will I do in Child Development?

You will study the family, pregnancy, birth, parenting and how children learn, grow and develop. You will do several projects – producing leaflets or booklets – as part of your learning, three of which will be submitted as part of your Resource Task coursework. In Year 11 you will undertake a detailed study of a baby or child which you are expected to write up as your Individual Task coursework element.

How will I be assessed in Child Development?

The Year 10 resource tasks are each worth 10% of the final mark. The Year 11 individual task is worth 30% of the final mark. Total coursework mark is therefore 60%. Much of the coursework is in the form of controlled assessments. A written examination (at the end of Year 11) is worth 40% of the final mark.

What are the important deadlines in Child Development?

It is expected that at least 3 resource tasks will have been completed by the end of Year 10. These will be put forward as coursework. By February half term in Year 11 your individual task (major coursework) must be completed for assessment.

GCSE Computing continued....

What will I study in computing?

Unit One: **Computer systems and programming**

This unit covers the body of knowledge about computer systems on which the examination will be based.

Unit Two: **Practical investigation**

An investigative computing task, chosen from a list provided by OCR, which assesses the following:

- research,
- technical understanding,
- analysis of a problem,
- historical perspective,
- use of technical writing skills,
- recommendations,
- evaluation.

Unit Three: **Programming project**

Learners will need to:

- Understand standard programming techniques
- Be able to design a coded solution to a problem including:
 - Develop suitable algorithms
 - Design suitable input and output formats
 - Identify suitable variables and structures
 - Identify test procedures.
- Create a coded solution fully annotating the developed code to explain its function
- Test their solution:
 - To show functionality
 - To show how it matches the design criteria
 - Identifying successes and any limitations.

Assessment - % Controlled Assessment – format of exams

Type of Assessment	Details of Assessment
Exam 40%	Unit 1 You will take a written paper lasting 1 hour 30 minutes and worth 80 marks. This will provide 40% of your overall marks.
Controlled Assessment 30%	Unit 2 This is a controlled assessment Investigative task. OCR will provide a set scenario with a choice of research tasks and is worth 45 marks.
Controlled Assessment 30%	Unit 3 This is a controlled assessment programming task where you will design, develop and test a solution to a problem within the OCR-set scenario and is worth 45 marks.

GCSE PERFORMING ARTS – DANCE

AQA 4230



Introduction:

This is a two year course which builds on work covered at KS3. The majority (80%) of the work is practical. Therefore it is essential that you are fit and interested in dancing. You must be confident enough to perform in front of an audience. There will be opportunities to visit local theatres to see live dance performances by professional companies.

Why should I choose Dance?

This course enables you to study Dance in depth during curriculum time. GCSE Dance is recognised in the same way as other GCSE subjects. It is especially useful for anyone interested in a career in Performing Arts/Drama.

What will I gain from studying Dance?

It will give you the opportunity to gain a full GCSE for something that you have probably been involved with for several years. You will definitely improve both your personal skill level and choreographic ability.

What will I do in Dance?

GCSE Dance will be broken down into three main components.

- 1) Improvement of personal skills and performance levels.
- 2) Development of choreographic skills.
- 3) Appreciation of professional choreographers and their different dance styles.

How will I be assessed?

20% - personal performance in a duo/group.

15% - composition of a solo dance related to a professional work

25% - composition of a solo/group dance relating to a specific theme.

20% - learning of a Set Dance composed by the Examination Board.

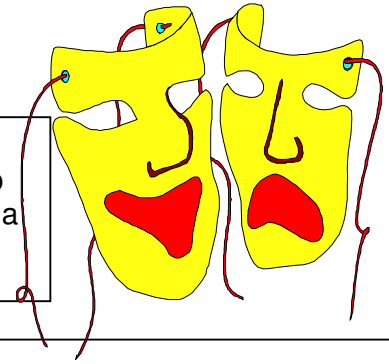
20% - theory examination involving the appreciation of two professional works.

What are the important deadlines?

It is essential that you are able to dance for the practical components – otherwise no marks can be awarded. Candidates will need to dance each component in front of the camera and moderator. The practical examination and subsequent moderation will take place around Easter time in Year 11. The theory paper is usually mid May.

GCSE DRAMA

AQA 4240



Introduction:

Taking Drama for GCSE enables you to continue to develop your creating, performing and responding skills and explore a wide range of styles, themes and techniques.

Why should I choose Drama?

Do you enjoy working with enthusiastic people and creating excellent theatre in lots of different ways? Can you see yourself getting up in front of an audience and showing stunning, moving, hilarious or educational pieces of drama in our brand new Drama Centre? Do you want to go and see lots of different plays and do workshops with professional actors? Are you prepared to work hard and play hard? Then this course is for you!

What will I gain from studying Drama?

Other than helping to give you tons of confidence, drama gives you all kinds of communication and group work skills which will look great on your CV. Whether you see yourself on the stage, in films, designing sets, costumes or lighting, or just enjoying watching theatre, this course will give you a good solid grounding and can lead to a variety of different careers and opportunities. A Drama GCSE says to an employer that you are a confident, disciplined and cultured team player!

What will I do in Drama?

You will study a wide variety of different topics, theatre techniques and skills while devising improvisations from stimuli and using scripts to create theatre. You will learn how to develop characters and study a play from the point of view of an actor and designer.

How will I be assessed in Drama?

60% of your GCSE grade will come from two assessed performances that your teacher will mark. In April of Year 11 an external moderator will come to mark your final performance. 40% of your grade comes from a written exam in which you will write about practical work completed during the course and live theatre that you have seen.

What are the important deadlines in Drama?

Assessed performances will be performed throughout the two years. In April of Year 11 you will perform to an external moderator (dates and times to be confirmed). You will regularly have to write evaluations and notes on your class work to help you with the final 40% written examination.

GCSE FOOD TECHNOLOGY

AQA 4545



Introduction:

This GCSE course builds on work introduced in Years 7, 8 and 9. The course involves using food as a material to explore, investigate and develop existing and new products. You will investigate food production for the home and for industry.

Why should I choose Food Technology?

Work in Food Technology provides opportunities to develop research, ICT, analytical, design and practical skills. Practical work plays an integral part in class work and coursework.

What will I gain from studying Food Technology?

In addition to developing the organisational and practical skills we all need in every day life, this subject would obviously be useful for those who want to progress to careers in the food industry and also for those who are interested in working in careers linked to food technology, such as sports nutrition, health related jobs and tourism.

What will I do in Food Technology?

Topics covered include: food safety and hygiene; healthy eating and nutrition, use of equipment; the functions and properties of ingredients; quality control and, for example, bread, pastry and cake making with the associated theory. Pupils will need to provide their own ingredients and cook on a regular basis. The Controlled Assessment will consist of identifying and designing a new food product which could be marketed. You will have to test your ideas before producing and evaluating your idea.

How will I be assessed in Food Technology?

The Controlled Assessment is worth 60% of the final mark. Practical work is an important part of this and practical skills are assessed. The written exam is worth 40%.

What are the important deadlines in Food Technology?

By the October half term of Year 11 (the end of Term 1), all design and planning for the controlled assessment task must be complete. The portfolio and practical tasks must be completed before the end of Term 4 (Easter) and submitted for assessment. Students will prepare for the exam by researching a topic set by the exam board and revising work covered in Year 10.

GCSE GRAPHIC PRODUCTS

AQA 4550



Introduction:

GCSE Graphic Products is an exciting subject which enables pupils to express their creativity through design. Skills covered will include: research, planning and exploration of various drawing techniques (including computer aided design), 3 dimensional modelling (including computer aided manufacture) and evaluation. Students will submit a number of designs and make projects in year 10 in order to build the necessary experience before working on their final controlled assessment task (coursework) in Year 11.

Why should I take Graphic Products as a course?

If you like drawing, coming up with ideas and problem solving then this course is a good combination of all those things! It offers a solid introduction to the exciting world of Graphic Design and any students considering a career in design will be well suited to this course.

What will I gain from studying Graphic Products?

Students will gain a full GCSE in a creative subject. They will gain knowledge and understanding of the design process and develop their skills in various drawing techniques and model making.

What will I do in Graphic Products?

Topics that are covered in Year 10 include: Drawing and presentation techniques, net design, packaging and model making, logo design, typography and graphic layout, print methods and finishes, materials, paper engineering and card mechanisms, CAD. In Year 11 students will be spending most of their time on designing and making a major coursework project and preparing for their final exam.

How will I be assessed in Graphic Products?

The coursework which takes the form of a controlled assessment task will count for 60% of your GCSE with the final 2 hour exam accounting for the remaining 40%.

What are the important deadlines in Graphic Products?

By the October half term of Year 11 all design and planning for the Controlled Assessment must be complete. The portfolio and practical tasks must be submitted by Easter for assessment. Students will prepare for the exam by researching a topic set by the exam board and revising work covered in Year 10.

GCSE RESISTANT MATERIALS

AQA 4560



Introduction:

This Design & Technology – Resistant Materials GCSE will develop and improve your practical skills. It can lead to further studies in design & technology or directly into a job.

Why should I take Resistant Materials as a course?

If you enjoyed the projects that you designed and made in wood, metal and plastics at Key Stage 3 then this is the subject for you! Following this course and being successful at GCSE will give you the opportunity to continue with the subject at A level at Furze Platt and, through further study, lead to a career as a designer. Resistant Materials can also be used to complement other science or technology subjects.

What will I gain from studying Resistant Materials?

Resistant Materials is a design and make subject so you will be designing through drawing and modelling. We also have the facility to use computer-aided design within the department which must be used in the final project in Year 11. You will continue to build upon the skills learned from projects in Key Stage 3.

What will I do in Resistant Materials?

You will follow the syllabus for Resistant Materials through AQA examinations. You will have two minor projects to complete in Year 10. In Year 11 you will design and make a major coursework project. You will develop your skills using a variety of tools, equipment and materials.

How will I be assessed in Resistant Materials?

The Controlled Assessment project will count for 60% of your final GCSE and you will sit one written examination which contributes 40%.

What are the important deadlines in Resistant Materials?

The major project needs to be completed in two parts; a design folder and a finished project in which you may use a combination of wood, metal and plastics. The folder should be completed in the first term of Year 11 and the making should be completed a few weeks before the end of Term 4. Both are submitted for assessment around the Easter holidays. Before the terminal exam, pupils will research information on a related topic set by the exam board and revise work covered in Year 10.

GCSE GEOGRAPHY

Edexcel 2GB01



Introduction:

The Edexcel GCSE Geography course is a modern issues-based course that will help you understand how and why the world is constantly changing and the challenges that we all face for survival in the 21st century, such as climate change and sustainability.

Why should I choose Geography?

Studying Geography helps you understand about the world you live in and to develop your responsibilities as a global citizen. As a geographer, you will appreciate the differences and similarities between people's views of the world and its environments, societies and cultures. This will give you an understanding of how you can contribute to a sustainable future for everybody. Geography also presents the opportunity to get out of the classroom and go on fieldtrips. There will also be plenty of opportunities to learn through your own investigations rather than having to listen or read.

What will I gain from studying Geography?

Geography works well with lots of other subject areas, providing a good link between the sciences, arts and humanities subjects. Through studying Geography you will gain lots of transferable skills, such as the ability to interpret maps, photos and statistics. When completing your controlled assessment you will develop skills, such as ICT, research and decision-making that will help in other subjects and will impress future employers.

What will I do in Geography?

The world is always changing. The course gives you the chance to learn about these changes:
Unit 1 – “Dynamic Earth” includes volcanoes & earthquakes; global warming, people's damage to the natural environment; conflicts on our coasts and extreme climates (polar and desert).
Unit 2 – “People and the Planet” includes population dynamics; sustainable use of resources; living spaces; making a living; changing cities and the world of work / global economy.
Unit 3 – Decision Making Exercise. You study a specific topic, such as Antarctica, in detail. This is designed to teach you how to make decisions about a specific topic, based on the evidence studied.
Unit 4 – Researching Geography. This involves undertaking research, carrying out fieldwork and then writing it up. The research and fieldwork will be undertaken out of class, but the writing up will all be in class time.

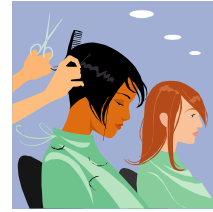
What are the important deadlines in Geography?

Currently all exams will be done at the end of Year 11, and controlled assessment at the beginning of Y11.

How will I be assessed in Geography?

There are three exams (all 1 hour long) and one controlled assessment. Units 1 and 2 are resourced based and have maps, photographs, and diagrams to help you answer the questions. Unit 3 is a decision making exercise. Unit 4 requires you to complete fieldwork and data collection, with results to be analysed and written up in class. All are worth 25% of the final mark.

City & Guilds diploma in Women's Hairdressing Services



Introduction:

This is a double option course run in conjunction with Berkshire College of Agriculture and other Maidenhead schools. The lessons will be held at the college site at Burchetts Green. Transport to and from this site is provided. **This course is NOT equivalent to a GCSE.**

Why should I choose Hairdressing?

Hairdressing is a level 2 course which provides an ideal preparation for a career in Hairdressing.

What will I gain from studying Hairdressing?

You will have the opportunity to develop many practical skills in a salon environment.

What will I do in Hairdressing?

You will study 4 core units:-

- Working in hairdressing
- Health and Safety in the salon
- Client consultation
- Shampoo and conditioning

Plus optional units e.g.

- Scalp massage
- Hairdressing design skills
- Colouring Hair

How will I be assessed in Hairdressing?

All units are assessed by your portfolio of evidence. There is no written examination.

What must I consider if I wish to choose Hairdressing?

If you are to benefit from this course you must be able to work as a member of a team.

There is only a very limited number of places available for this course so students will be selected for a place according to their merits. A separate application form can be found at the end of this publication.



Introduction:

The GCSE History course

The GCSE History course gives you the opportunity to learn about real people: you understand what motivates people and what they think and feel. If you like people, you should like history. History has made our world what it is and is also part of your future.

*"The study of History is the beginning of wisdom."
Jean Bodin 1530–1596, French Economist*

Why should I choose History?

- To develop the skills to look beyond the headlines, to ask questions properly and to express your own opinions.
- To train your mind and teach you how to think and process information.
- To help you make sense of most other subjects.
- To understand the world in which we live.
- To understand the origins of modern political and social problems.
- To learn how and why people behave as they do.
- History makes you appreciate that people in the past were not just 'good' or 'bad', but motivated in complex and inconsistent ways, just like us.
- History provides you with the skills employers are looking for.

What will I gain from studying History?

- The ability to analyse and evaluate historical problems.
- To interpret data: written, pictorial, graphical and numerical and recognise bias, limitations and the use of propaganda.
- To consider two sides of an argument and reach a substantiated judgement.
- To communicate clearly and accurately on paper and orally.

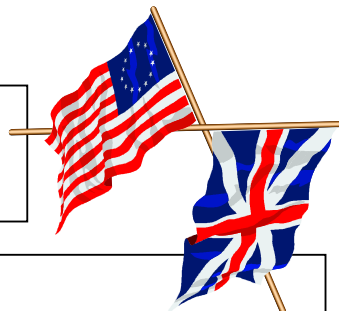
What will I do in History?

- International Relations 1919–2005: Option 1919 – 1939
- Depth Study on the following: Germany 1918–1945
- How was British society changed 1950s – 1970s
- Significance and Representation and Interpretations – a controlled assessment on one of the following: The role of the Individual in History; The role of a factor in History; A Modern World Study; A Study in Depth.

GCSE HISTORY

Continued

OCR J417



How will I be assessed in History?

International Relations, 1919–2005 (*one question*) and the chosen **Depth Study** (*two questions: one source based and a choice of one from two structured essays*)
45% 2 hours 75 marks externally assessed.

British Depth Study

This paper has **one** section involving the detailed investigation of an Historical Issue. All questions will be compulsory. There will be no fewer than five and no more than seven questions set on a range of source material.

30% of the total GCSE marks 1 hr 45 minutes written paper 50 marks

This unit is externally assessed.

Controlled Assessment:

Significance and Representations and Interpretations

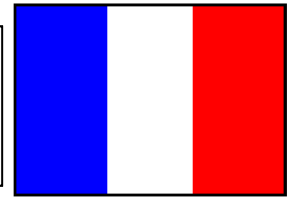
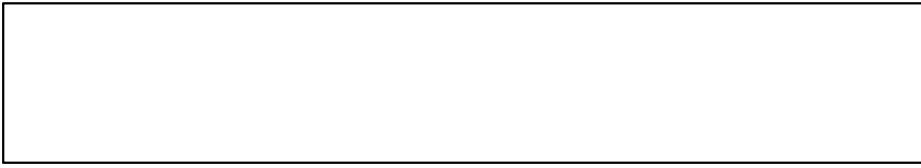
25% of the total GCSE marks

50 marks

This unit is internally assessed and externally moderated.

What are the important deadlines in HISTORY?

Controlled Assessment task will be taken in November/December of Year 11.



chieved an excellent learning skills with

unication skills and situations. Many s diverse as Media e no plans to go to n in many countries rather than a career ad.

ical communication. nch speakers; it will lp you improve your iation of the French

e structure and your nd Writing. ICT will fun; you will study a od and drink, the

aking, Reading and final mark – these t two pieces of work ing count 20% each and students can be Students are well sements.

GCSE MODERN FOREIGN LANGUAGES German

AQA 4665



Introduction:

Having already accomplished a foundation year in German, during which you have not only achieved a proficient level of German but also completed the first year of a three year course, you are now prepared and able to progress with confidence to GCSE level.

Why should I choose German?

German is the most widely spoken language in Europe. It is the official language in Germany, Austria, Switzerland, Luxembourg and Liechtenstein. It is also spoken in significant parts of northern Italy, eastern Belgium, the Netherlands, Denmark and eastern France – as well as other parts of Europe and the World. A GCSE qualification in German could provide you with endless opportunities to work in the UK as well as to travel and work abroad.

What will I gain from studying German?

Learning German not only provides you with key language skills (eg. the ability to take in and manipulate information, to further strengthen your proficiency in English and to heighten your communication skills) it also makes you a very marketable employee. German is an international language of business, scientific research, publishing, hospitality and tourism. A GCSE qualification in German will provide you with endless opportunities when making future decisions about which career path you choose to follow. Think of a career **with** German rather than a career in German.

What will I do in German?

You will develop your knowledge of vocabulary and language structure and your ability in the four language skills: Listening, Speaking, Reading and Writing. ICT will also be used to support these activities. During the course you will study a range of topics including leisure time and holidays, media, food and drink, the environment, career plans and work related issues. The GCSE course is great fun and whilst developing your language skills, you will also learn about the culture of German speaking countries – including festivals, food and music.

How will I be assessed in German?

You will be assessed in the four language skills: Listening, Speaking, Reading and Writing. Speaking and Writing count 30% each towards your final mark – these assessments are conducted during the two year course and the best two pieces of work from each skill are selected from your portfolio. Reading and Listening count 20% each towards your final mark – papers are sat at the end of the course and students can be entered for Foundation or Higher papers in any combination. Students are well supported and prepared throughout the course for each of these assessments.

GCSE MODERN FOREIGN LANGUAGES Spanish

AQA 4695



Introduction:

Having already studied Spanish for three years, you will have achieved an excellent foundation to further develop your knowledge and language learning skills with confidence at GCSE level.

Why should I choose Spanish?

Spanish is spoken in many countries and by many people around the world. A qualification in a language is highly regarded in terms of communication skills and cultural awareness; an invaluable asset for employment opportunities. Many universities also offer a foreign language option in degree courses, but even if you have no plans to go to university, many careers value a second language. If you think of a job **with** Spanish rather a job in Spanish, there is great career choice both in this country and abroad.

What will I gain from studying Spanish?

You will be well prepared and confident to use Spanish for practical communication. Studying Spanish will not only enable you to communicate with Spanish speakers; it will also widen your understanding of language structures, which will help you improve your English. You will also further develop cultural awareness and an appreciation of the Spanish speaking world.

What will I do in Spanish?

You will further develop your knowledge of Spanish vocabulary and language structure as well as your ability in the four language skills: Listening, Speaking, Reading and Writing. ICT will also be used to support these activities. The GCSE course is great fun; you will study a range of topics including food and drink, media, leisure time, the environment, career plans and work related issues. You will also gain a greater understanding of the diverse culture of the Spanish speaking world.

How will I be assessed in Spanish?

You will be assessed in the four language skills: Listening, Speaking, Reading and Writing. Speaking and Writing count 30% each towards your final mark – these assessments are conducted during the two year course and the best two pieces of work from each skill are selected from your portfolio. Reading and Listening count 20% each towards your final mark – papers are sat at the end of the course and students can be entered for Foundation or Higher papers in any combination. Students are well supported and prepared throughout the course for each of these assessments.

BTEC First certificate/diploma Motor Vehicles

Edexcel



Introduction:

This is a double option course run in conjunction with Berkshire College of Agriculture and other Maidenhead schools. The lessons will be held at the college site at Burchetts Green. Transport to and from this site is provided. **This course is NOT equivalent to a GCSE.**

Why should I choose Motor Vehicle Studies?

Motor Vehicle Studies is a BTEC course which helps you to develop greater independence and prepare for employment in the motor vehicle industry or progression on to higher level qualifications.

What will I gain from studying Motor Vehicle Studies?

This course gives you the opportunity to acquire knowledge and understanding of vehicle maintenance and repair.

What will I do in Motor Vehicles?

You will study 3 core units:-

- Essential working practices in vehicle technology
- Vehicle electrical and electronic principles
- Engineering skills for vehicle repair

Plus three specialist units e.g:-

- Routine vehicle maintenance
- Vehicle fault diagnosis
- Vehicle engine principles

How will I be assessed in Motor Vehicle Studies?

All units are assessed by your portfolio of evidence. There is no written examination.

What must I consider if I wish to choose Motor Vehicles Studies?

If you are to benefit from this course you must be able to work as a member of a team. You must be prepared to work outside and attend regularly.

There is only a very limited number of places available for this course so students will be selected for a place according to their merits. A separate application form can be found at the end of this publication.

GCSE MUSIC

AQA 4270



Introduction:

Taking the subject for GCSE enables you to explore music of all kinds, from classical to blues, through listening, composing and performing activities.

Why should I choose Music?

You will acquire a deeper understanding of music, essential for careers in music but also a useful way of showing future employers/higher education bodies that you can succeed in a broad range of subject disciplines.

What will I gain from studying Music?

If you have been learning an instrument or you do a lot of singing, why not put all those years of hard work towards a GCSE?
40% of the marks are allocated to performing. You can also use your instrument to help you to prepare the two compositions!

What will I do in Music?

You will be studying a number of musical styles and genres and for each one you will listen to examples, perform music of this type and have a go at some composing. Before you start your first coursework composition we will teach you how to use the Sibelius software which will help you to write your ideas as music! You will have the opportunity to record your music in our new recording studio. Music is not only about passing exams though; we also encourage you to take up performing opportunities both in school and in the wider community.

How will I be assessed in Music?

Your teacher will mark your performing and one of the compositions. The other composition and the listening paper will be marked by an examiner.

What are the important deadlines in Music?

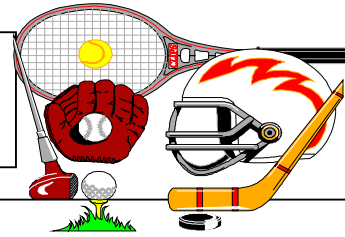
End of Year 10: Complete and record first composition and record first piece of performing coursework.

Easter of Year 11: Complete and record second composition and record second piece of performing coursework.

May/June of Year 11: Listening paper.

GCSE PHYSICAL EDUCATION

Edexcel 2PE01



Introduction:

If you enjoy practical P.E or are interested in studying the human body and how it works then GCSE PE could be for you. Over 5 lessons per fortnight you will do 3 practical lessons studying 10 different sports over the 2 years and 2 theory lessons.

Why should I choose Physical Education?

GCSE PE is an exciting and largely practical based GCSE. If you enjoy sport and have a particular interest in improving your performance you will get an extra 5 hours per fortnight to do so!

What will I gain from studying Physical Education?

From this GCSE you will gain the knowledge of how to...

- Play, coach and officiate at least 6 different sports.
- Understand how your body works and responds to exercise.
- How to train to improve your levels of fitness.

What will I do in Physical Education?

-You will get a chance to play all of the school's major sports as well as some extra ones i.e. Trampolining and will try to improve your skills. You will also study various aspects of Anatomy and Physiology.

How will I be assessed in Physical Education?

Your GCSE PE grade is split 60% practical and 40% theory.

For the practical you have to choose 4 sports to be assessed in as a player, coach or official. At least 2 have to be as a player.

40% is a 1½ hour exam in year 11.

What are the important deadlines in Physical Education?

At some point in the course you will have to plan, carry out and monitor your own 6 week training program with the aim of improving your fitness.

BTEC FIRST DIPLOMA/ CERTIFICATE IN PUBLIC SERVICES

Edexcel



Introduction:

This is a double option course run in conjunction with Berkshire College of Agriculture and other Maidenhead schools. The lessons will be held at the college site at Burchetts Green. Transport to and from this site is provided. **This course is NOT equivalent to a GCSE.**

Why should I choose Public Services?

Public Services is a practical vocational course, which will prepare you for future work in a wide range of Public Service occupations, such as Local Government, Social Care, Armed Forces, Police, Fire, Ambulance, Prison Services and Private Security Firms.

What will I gain from studying Public Services?

You will learn about the employment areas available within the Public Sector and develop the skills needed for a career in a Public Service.

What will I do in Public Services?

You will study 3 core units:-

- 1) Uniformed Public Service Employment.
- 2) Public Service Fitness.
- 3) Public Service Skills.

Plus one or more specialist units:-

- Citizenship – the individual and society.
- The value of sport and recreation in the Public Services.
- Adventurous activities and teamwork.

How will I be assessed in Public Services?

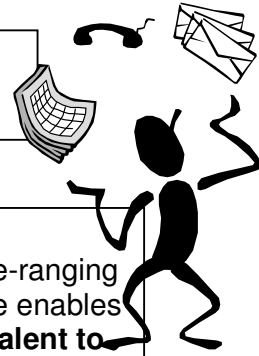
You will complete projects and assignments that are based on realistic workplace situations, activities and demands.

What must I consider if I wish to choose Public Services?

If you are to benefit from this course you must be willing and able to work independently and meet deadlines. You must be prepared to work as a member of a team and attend regularly.

There are only a very limited number of places available for this course so students will be selected for a place according to their merits. A separate application form can be found at the end of this publication.

BTEC Work Skills



Introduction:

Work Skills is a new course, which has been developed following wide-ranging research and consultation with employers. The flexibility of the course enables students to gain credits at their own pace. **This course is NOT equivalent to a GCSE.**

Why should I choose Work Skills?

Work Skills will include work placement(s), interview techniques, teamwork and vocational skills as well as the soft skills that employers look for – adaptability, a positive ‘can do’ attitude and a willingness to learn. Work Skills would be an ideal subject to study along with College courses, such as Construction and Motor Vehicle Studies.

What will I gain from studying Work Skills?

Depending on the number of credits that you achieve, you will be awarded either a BTEC Certificate, BTEC Extended Certificate or a BTEC Diploma. You will also gain many skills you will need when you look for employment.

What will I do in Work Skills?

You will study 30 bite-sized units from four skills pathways – Personal Life Skills, Sustainable Employability Skills, Work Placement Skills and Skills for Business. Units are available at Level 2.

How will I be assessed in Work Skills?

All units are assessed by a range of assessment methods – e.g. portfolios of evidence, short tests or an interview. There is no final written examination. There is only a very limited number of places available for this course. Students will be invited to take up a place.

NAME _____ FORM _____

Science Choices	Tick only one
GCSE Biology / GCSE Chemistry / GCSE Physics (Triple Award)	
GCSE Core Science & GCSE Additional Science (Double Award)	
BTEC Applied Science	

Choose
1 double block subject and **2** single block subjects
or
4 single block subjects
or
2 double block subjects
 (but only one from those offered by the colleges)

Subjects	Rank order
BTEC Art and Design	
BTEC Art and Graphics	
BTEC Art Textiles	
Business Studies	
Child Development	
Computing	
Dance	
Drama	
Food Technology	
French	
Geography	
German	
Graphic Products	
City and Guilds - Hairdressing (double block BCA)	
History	
BTEC Motor Vehicles (double block BCA)	
Music	
Physical Education	
BTEC Public Services (double block BCA)	
Resistant Materials	
Spanish	
BTEC Work Skills	

Preferred Choices

Choose up to 4 subjects and please rank them in order of preference
1 – 4

Reserve Choices

Choose **2** reserve subjects and mark these as **R1** and **R2**

If you have problems with your choices please write this clearly on the reverse side of this sheet. Completing this form does not mean you have made your final choice. You can change your mind. We always try to provide you with your first choices but we cannot guarantee this. This form will be used as a guide when you are interviewed about which subjects you should do next year.

SIGNED:..... (Parent/Guardian)
RETURN THIS FORM TO RECEPTION NO LATER THAN FRIDAY 9th MARCH 2012.

NAME _____ FORM _____

BCA COURSES

Please answer the questions below to help us understand why you have chosen a course at BCA.

Course name _____

Why do you want to do this course?

What previous experience do you have in this area?

How will this course help you in your future career?